

THE GROSVENOR COLLECTION

VIRIDIUM

CAMBERLEY SURREY



Viridium – Winner of Best Medium
Sized Development in the U.K.



VIRIDIUM THE GROSVENOR COLLECTION

VIRIDIUM IS AN EXCLUSIVE LUXURY GATED DEVELOPMENT BY THE MULTI-AWARD-WINNING HOUSEBUILDER, HODSON DEVELOPMENTS. SET OVER THREE BUILDINGS VIRIDIUM COMPRISES OF AN OUTSTANDING COLLECTION OF EXQUISITE ONE, TWO AND THREE BEDROOM APARTMENTS, GARDEN APARTMENTS AND PENTHOUSES WITH PRIVATE GATED OFF ROAD PARKING.

The apartments at Viridium blend modern sophistication with time honoured construction methods and bear all the hallmarks of truly exceptional homes for the most discerning of purchasers. The apartments have been individually designed to create a variety of layouts with outstanding build standards and finishes. All the apartments have either private patios, balconies or terraces. Internally, they are equipped with the most up-to-date and high standard specification which combines the efficiency of a 21st century lifestyle within a luxury setting. Mature landscaping envelopes the mix of traditional and modern external architecture of the buildings with private gated parking areas seamlessly blending with the surroundings to create the ultimate in fine and tranquil living. Internally the spacious apartments at Viridium include a stunning selection of bespoke kitchens with a superb selection of appliances. Furthermore, the bathrooms and en-suites are appointed with only the finest fittings including Duravit sanitary ware and showers with contemporary Hansgrohe furnishings complemented by the very best tiles from the exclusive Saloni range.

The luxury apartments at Viridium offers the opportunity of secure luxury living within just a few minutes walking distance from the town centre and the mainline station.

GROUND FLOOR 55–61

APARTMENT 55

TOTAL	73 sq m Metric	776 sq ft Imperial
Living/Kitchen/ Dining Room	5.68m x 5.2m*	18'7" x 16'8"*
Bedroom 1	4.01m x 2.5m	13'2" x 8'2"
Bedroom 2	3.42m x 4.34m*	11'3" x 14'8"*
Bathroom	2.03m x 2.04m	6'8" x 6'7"
En-suite	1.49m x 2.04m	4'10" x 6'7"

APARTMENT 56

TOTAL	71 sq m Metric	757 sq ft Imperial
Living/Kitchen/ Dining Room	7.78m x 3.31m*	25'6" x 10'10"*
Bedroom 1	5.69m x 2.9m*	18'8" x 9'6"*
Bedroom 2	3.81m x 2.52m*	12'6" x 8'3"*
Bathroom	2.12m x 2.45m	7'2" x 8'0"
En-suite	2.23m x 1.5m	7'6" x 4'11"

APARTMENT 57

TOTAL	66 sq m Metric	707 sq ft Imperial
Living/Kitchen/ Dining Room	5.82m x 4.71m*	19'3" x 15'5"*
Bedroom 1	5.82m x 2.57m*	19'3" x 8'5"*
Bedroom 2	3.28m x 3.59m*	10'9" x 11'9"*
Bathroom	1.95m x 2.05m	6'4" x 6'8"
En-suite	2.17m x 1.49m	7'1" x 4'10"

APARTMENT 58

TOTAL	70 sq m Metric	745 sq ft Imperial
Living/Kitchen/ Dining Room	3.47m x 7.32m	11'4" x 24'0"
Bedroom 1	2.7m x 4.23m*	8'10" x 13'10"*
Bedroom 2	2.65m x 3.48m	8'8" x 11'5"
Bathroom	2.05m x 2.61m	6'8" x 8'6"
En-suite	1.55m x 2.22m	5'1" x 7'3"

APARTMENT 59

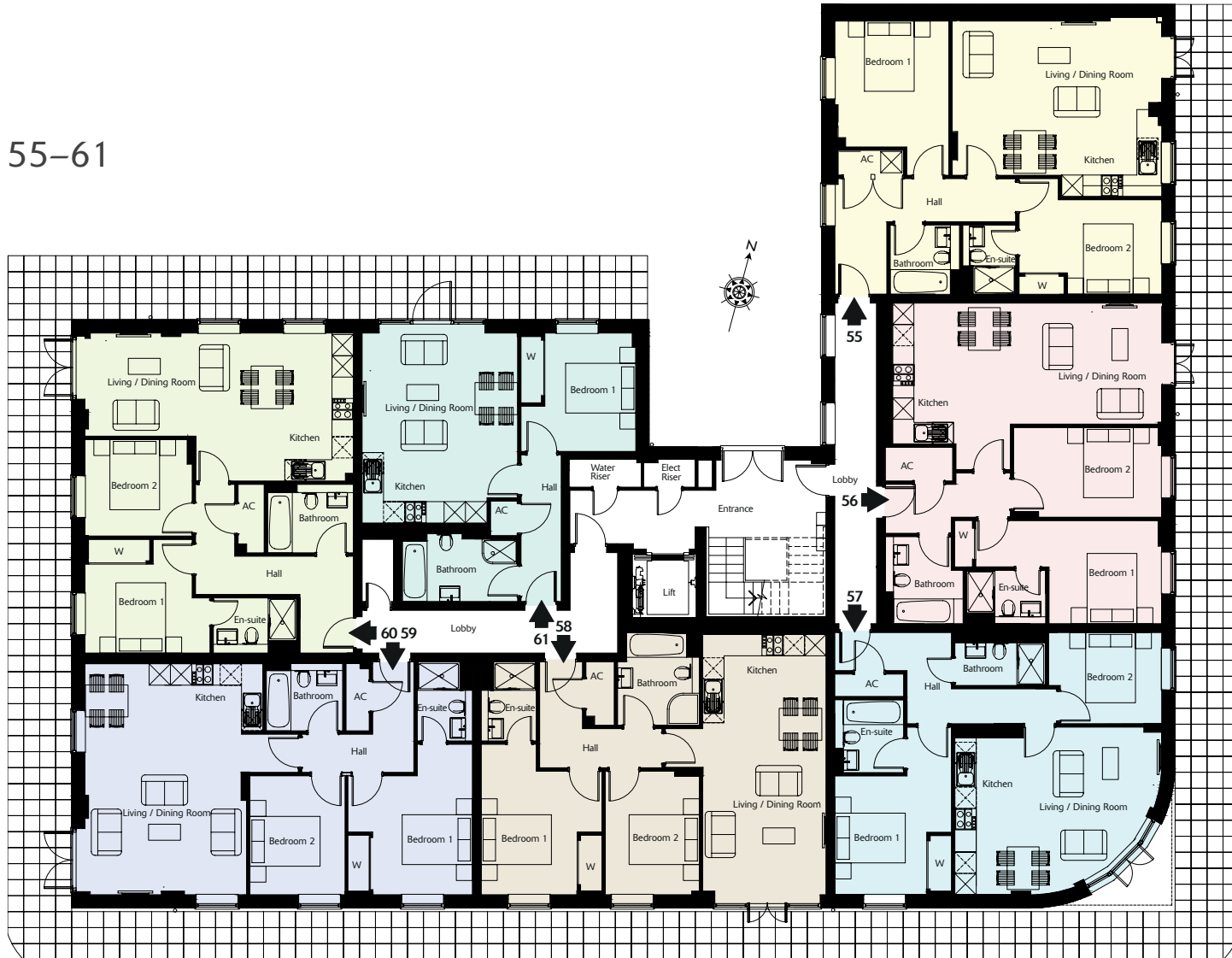
TOTAL	73 sq m Metric	778 sq ft Imperial
Living/Kitchen/ Dining Room	4.4m x 6.5m*	14'5" x 21'3"*
Bedroom 1	2.8m x 4.23m*	9'2" x 13'10"*
Bedroom 2	2.8m x 3.34m	9'2" x 10'11"
Bathroom	2.15m x 1.94m	7'0" x 6'4"
En-suite	1.55m x 2.22m	5'1" x 7'3"

APARTMENT 60

TOTAL	69 sq m Metric	741 sq ft Imperial
Living/Kitchen/ Dining Room	7.55m x 4.16m*	24'9" x 13'8"*
Bedroom 1	3.52m x 3.2m*	11'6" x 10'6"*
Bedroom 2	3.02m x 2.72m	10'5" x 8'11"
Bathroom	2.28m x 1.93m	7'5" x 6'5"
En-suite	2.34m x 1.55m	7'8" x 5'1"

APARTMENT 61

TOTAL	49 sq m Metric	518 sq ft Imperial
Living/Kitchen/ Dining Room	4.38m x 5.54m*	14'0" x 18'2"*
Bedroom	3.23m x 3.33m*	10'7" x 10'11"*
Bathroom	2.38m x 1.91m*	7'9" x 6'3"*



* = maximum measurement

FIRST FLOOR 62–68

APARTMENT 62

TOTAL	69 sq m Metric	734 sq ft Imperial
Living/Kitchen/ Dining Room	5.68m x 5.09m*	18'7" x 16'8"*
Bedroom 1	4.01m x 2.5m	13'2" x 8'2"
Bedroom 2	3.42m x 4.34m*	11'3" x 14'8"*
Bathroom	2.03m x 2.04m	6'8" x 6'7"
Ensuite	1.49m x 2.04m	4'10" x 6'7"

APARTMENT 63

TOTAL	67 sq m Metric	715 sq ft Imperial
Living/Kitchen/ Dining Room	6.18m x 3.31m*	20'3" x 10'10"*
Bedroom 1	5.69m x 2.9m*	18'8" x 9'6"*
Bedroom 2	3.8m x 2.52m*	12'6" x 8'3"*
Bathroom	2.18m x 2.45m	7'2" x 8'0"
Ensuite	2.23m x 1.5m	7'6" x 4'11"

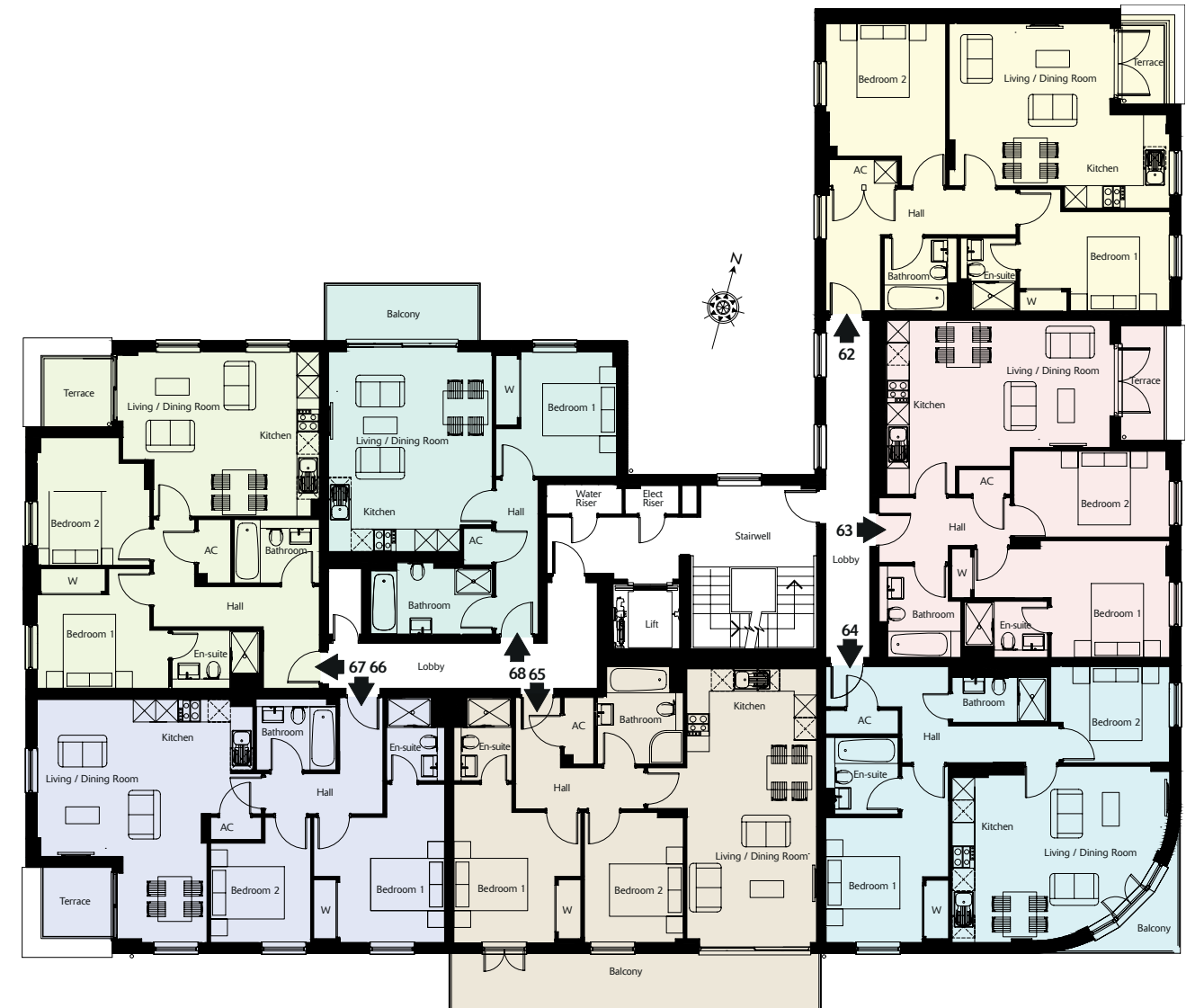
APARTMENT 64

TOTAL	66 sq m Metric	707 sq ft Imperial
Living/Kitchen/ Dining Room	5.82m x 4.71m*	19'3" x 15'5"*
Bedroom 1	5.82m x 2.57m*	19'3" x 8'5"*
Bedroom 2	3.28m x 3.59m*	10'9" x 11'9"*
Bathroom	1.95m x 2.05m	6'4" x 6'8"
Ensuite	2.17m x 1.5m	7'1" x 4'10"

APARTMENT 65

TOTAL	70 sq m Metric	747 sq ft Imperial
Living/Kitchen/ Dining Room	3.47m x 7.32m	11'4" x 24'0"
Bedroom 1	2.7m x 4.23m*	8'10" x 13'10"*
Bedroom 2	2.65m x 3.48m	8'8" x 11'5"
Bathroom	2.1m x 2.61m	6'8" x 8'6"
Ensuite	1.56m x 2.22m	5'1" x 7'3"

* = maximum measurement



APARTMENT 66

TOTAL	70 sq m Metric	722 sq ft Imperial
Living/Kitchen/ Dining Room	4.4m x 6.5m*	14'5" x 21'3"*
Bedroom 1	2.8m x 4.23m*	9'2" x 13'10"*
Bedroom 2	2.8m x 3.35m	9'2" x 10'11"
Bathroom	2.15m x 1.94m	7'0" x 6'4"
Ensuite	1.55m x 2.22m	5'1" x 7'3"

APARTMENT 67

TOTAL	66 sq m Metric	703 sq ft Imperial
Living/Kitchen/ Dining Room	5.25m x 4.16m*	17'3" x 13'8"*
Bedroom 1	3.52m x 3.2m*	11'6" x 10'6"*
Bedroom 2	3.02m x 2.72m	10'5" x 8'11"
Bathroom	2.28m x 1.93m	7'5" x 6'5"
Ensuite	2.34m x 1.55m	7'8" x 5'1"

APARTMENT 68

TOTAL	49 sq m Metric	518 sq ft Imperial
Living/Kitchen/ Dining Room	4.38m x 5.54m*	14'0" x 18'2"*
Bedroom	3.23m x 3.33m*	10'7" x 10'11"*
Bathroom	2.38m x 1.91m*	7'9" x 6'3"*

SECOND 69–75 & THIRD 76–82 FLOORS

APARTMENT 69 & 76

TOTAL	69 sq m Metric	734 sq ft Imperial
Living/Kitchen/ Dining Room	5.68m x 5.1m*	18'7" x 16'8"**
Bedroom 1	4.01m x 2.5m	13'2" x 8'2"
Bedroom 2	3.42m x 4.34m*	11'3" x 14'8"**
Bathroom	2.03m x 2.04m	6'8" x 6'7"
En-suite	1.49m x 2.04m	4'10" x 6'7"

APARTMENT 70 & 77

TOTAL	67 sq m Metric	715 sq ft Imperial
Living/Kitchen/ Dining Room	6.18m x 3.31m*	20'3" x 10'10"**
Bedroom 1	5.69m x 2.9m*	18'8" x 9'6"**
Bedroom 2	3.81m x 2.52m*	12'6" x 8'3"**
Bathroom	2.18m x 2.45m	7'2" x 8'0"
En-suite	2.23m x 1.5m	7'6" x 4'11"

APARTMENT 71 & 78

TOTAL	66 sq m Metric	707 sq ft Imperial
Living/Kitchen/ Dining Room	5.82m x 4.71m*	19'3" x 15'5"**
Bedroom 1	5.82m x 2.57m*	19'3" x 8'5"**
Bedroom 2	3.28m x 3.59m*	10'9" x 11'9"**
Bathroom	1.95m x 2.05m	6'4" x 6'8"
En-suite	2.17m x 1.49m	7'1" x 4'10"

APARTMENT 72 & 79

TOTAL	70 sq m Metric	747 sq ft Imperial
Living/Kitchen/ Dining Room	3.47m x 7.32m	11'4" x 24'0"
Bedroom 1	2.7m x 4.23m*	8'10" x 13'10"**
Bedroom 2	2.65m x 3.48m	8'8" x 11'5"
Bathroom	2.05m x 2.61m	6'8" x 8'6"
En-suite	1.55m x 2.22m	5'1" x 7'3"

APARTMENT 73 & 80

TOTAL	70 sq m Metric	722 sq ft Imperial
Living/Kitchen/ Dining Room	4.4m x 6.5m*	14'5" x 21'3"**
Bedroom 1	2.8m x 4.23m*	9'2" x 13'10"**
Bedroom 2	2.8m x 3.35m	9'2" x 10'11"
Bathroom	2.15m x 1.94m	7'0" x 6'4"
Ensuite	1.55m x 2.22m	5'1" x 7'3"

APARTMENT 74 & 81

TOTAL	66 sq m Metric	703 sq ft Imperial
Living/Kitchen/ Dining Room	5.25m x 4.16m*	17'3" x 13'8"**
Bedroom 1	3.52m x 3.2m*	11'6" x 10'6"**
Bedroom 2	3.02m x 2.72m	10'5" x 8'11"
Bathroom	2.28m x 1.93m	7'5" x 6'3"
Ensuite	2.34m x 1.55m	7'8" x 5'1"

APARTMENT 75 & 82

TOTAL	49 sq m Metric	518 sq ft Imperial
Living/Kitchen/ Dining Room	4.38m x 5.54m*	14'0" x 18'2"**
Bedroom	3.23m x 3.33m*	10'7" x 10'11"**
Bathroom	2.38m x 1.91m*	7'9" x 6'3"

FOURTH FLOOR

83–87

APARTMENT 83

TOTAL	72 sq m Metric	767 sq ft Imperial
Living/Kitchen/ Dining Room	4.11m x 6.18m*	13'6" x 20'3"**
Bedroom 1	3.38m x 3.25m*	11'1" x 10'8"**
Bedroom 2	4.25m x 2.85m*	13'11" x 9'4"

APARTMENT 84

TOTAL	100 sq m Metric	1077 sq ft Imperial
Living/Kitchen/ Dining Room	7.6m x 6.62m*	24'11" x 21'8"
Bedroom 1	3.84m x 3.75m*	12'7" x 12'3"
Bedroom 2	3.84m x 2.71m*	12'7" x 8'11"
Bedroom 3	3.84m x 2.45m*	12'7" x 8'0"

APARTMENT 85

TOTAL	71 sq m Metric	764 sq ft Imperial
Living/Kitchen/ Dining Room	6.12m x 5.78m*	20'0" x 18'11"
Bedroom 1	3.2m x 4.95m*	10'5" x 16'3"
Bedroom 2	3.56m x 3.76m*	11'8" x 12'4"

APARTMENT 86

TOTAL	77 sq m Metric	820 sq ft Imperial
Living/Kitchen/ Dining Room	5.25m x 5.7m*	17'3" x 18'8"
Bedroom 1	4.05m x 3.13m*	13'3" x 10'3"
Bedroom 2	5.25m x 2.78m*	17'3" x 9'1"

APARTMENT 87

TOTAL	49 sq m Metric	518 sq ft Imperial
Living/Kitchen/ Dining Room	4.38m x 5.55m*	14'0" x 18'2"
Bedroom	3.23m x 3.33m*	10'7" x 10'11"

* = maximum measurement

* = maximum measurement

SPECIFICATION SECOND TO NONE



EXTERNAL FINISHES

- Secure electric gated development with private allocated parking
- Established landscaping to communal and parking areas
- Path and patio areas in Heritage Yorkstone paving with feature landscaping
- Bollard lighting to the upper deck and lower deck parking areas

• KITCHENS

- Apartments have custom designed high specification kitchens
- Stainless steel sink bowl with chrome mixer taps
- Zanussi touch control ceramic hob with stainless steel splash-back
- Zanussi integrated oven and extractor hood
- Zanussi integrated fridge/freezer
- Zanussi integrated dishwasher
- Integrated washer/dryer*
- LED down-lighters to ceiling and LED feature lights under high level units
- Polished chrome electric points above worktops
- Saloni ceramic floor tiling

BATHROOM AND EN-SUITES

- The bathroom and en-suites are equipped with Duravit sanitaryware
- Contemporary Hansgrohe polished chrome brassware
- Thermostatic overhead chrome pressure shower with frameless glass shower screen and polished chrome fittings to all en-suite shower rooms
- Thermostatically controlled chrome shower, mixer system and glass screen above baths to all main bathrooms
- Chrome finish heated towel ladder rails are independently heated for summer use
- Shaver socket to bathrooms and en-suites
- Saloni porcelain and ceramic tiles to the walls and floors
- Illuminated wall mounted mirror

FLOORING

- "Cloud 9" underlay as standard
- Luxury carpet in a number of colour options
- Engineered Oak timber flooring to areas as specified*
- Soundproof concrete flooring between floors of building (sound tested to exceed UK Building Regulations performance standards)



ELECTRICAL INSTALLATIONS

- Each apartment features a comprehensive electrical system including LED recessed ceiling down-lighters in white finish
- Polished chrome finished switches and sockets in the kitchen
- A generous supply of socket outlets are provided throughout
- Mains operated smoke detectors (with a battery back-up) are fitted with a heat detector to the kitchen
- Each apartment has a Mechanical Ventilation and Heat Recovery system which supplies and extracts air throughout to all rooms
- External lighting to patios, balconies and terraces

TELEVISION AND TELEPHONE

- Comprehensive and 'future proof' wiring system with television/plasma points located to the living room and all bedrooms
- Wall and floor TV/Plasma points wired to a central position in the apartment that connects to a communal Satellite system
- Television/Plasma points incorporate satellite wiring to enable purchaser connection to Sky Plus / Sky HD (subject to service provider)
- Telephone outlets are located to living rooms and all bedrooms
- CAT 5E wiring throughout

DECORATION AND FINISH

- All internal walls and ceilings have a smooth plaster finish and emulsion paint
- Internal woodwork finished in emulsion paint
- Master Bedrooms and selected second bedrooms have built-in wardrobes with double mirrors and hanging rails

TERRACES AND BALCONIES

- Balcony or terrace to all apartments
- Apartments on floors one to four have spacious walk-on terraces or balconies, with chrome balustrade and glazing
- Ground floor apartments have direct access to large private terrace patios in Heritage Yorkstone paving with landscaping
- All balconies and terraces have external lighting

SECURITY

- Secure electric gated development
- Key fobs activate gate and communal front door entrance system

- Secure underground car parking
- Brick wall and railing boundary to entire development
- Entry phone system to each apartment
- Electric opening communal front door, pedestrian gate and main gates which can be activated from individual apartments
- External lighting is provided at the entrance points to all communal areas and car parking areas
- Approved security system available*
- All apartment front doors have 'Secure by Design' standard security locks with security viewers fitted

CENTRAL HEATING

- A highly efficient high-pressurised hot water cylinder. The programmable pressurised system provides equally pressured hot and cold water for optimum use
- A back up electric double immersion heater is fitted to the hot water cylinder
- Central heating system complete with a main programmer which operates the thermostatically control Ducasa Avanti radiators

EXTERNAL WINDOWS AND DOORS

- All apartment front doors have post letter plates
- Solid luxury White Oak flush 'Secure by Design' apartment front doors which benefit from three-point Espagnolette locking systems and sound reducing specification for maximum security
- Sealed unit aluminum Velfac double glazed windows and external patio/terrace doors with sound resistance and energy saving glass

INTERNAL DOORS AND STORAGE

- High specification white solid wood internal doors throughout apartments, finished with polished chrome furnishings
- Double cupboards in the hallway for extra storage (most apartments)

INSULATION

- Excellent levels of insulation provided to reduce utility bills
- Excellent levels of sound insulation (exceeds UK Building Regulations performance standards) to remove sound transmission from apartment to apartment
- Properties are air pressure tightness tested and certified to achieve minimal heat loss in the winter and avoid significant and unwanted overheating in the height of summer

COMMUNAL AREAS

- Landscaped communal areas
- Cycle stores
- Communal lift to all floors
- 'Post box free' entrance foyer
- Luxury carpet to all communal areas

* = available as an additional extra

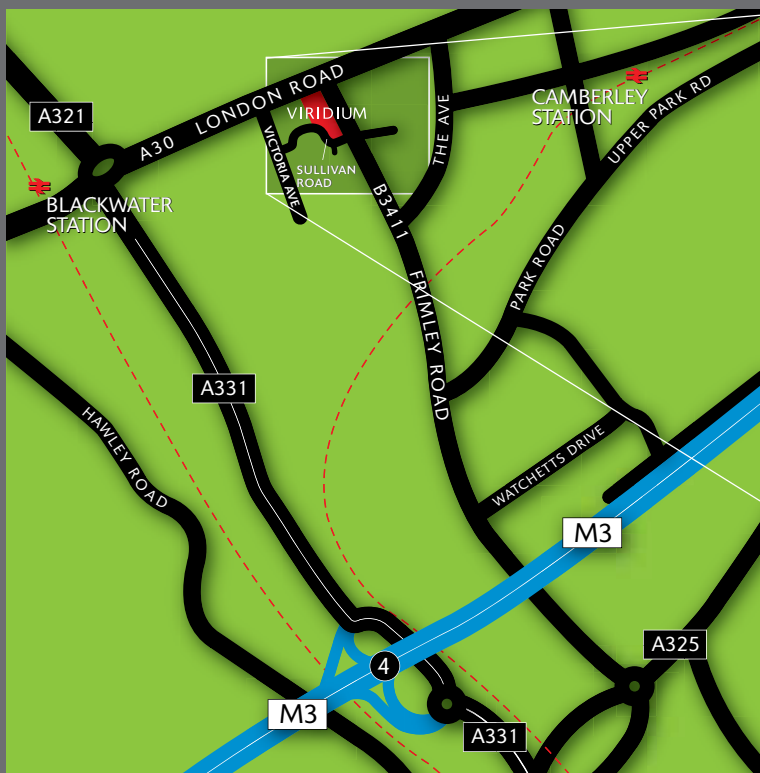
WARRANTY

- Each home at the development has been independently surveyed and inspected throughout its construction by Building Inspectors. Upon structural completion the property will be issued a Premier Guarantee 10 Year Buildmark Warranty for purchasers' complete peace of mind

premier
guarantee



All photos are of Viridium



VIRIDIUM

SULLIVAN ROAD, CAMBERLEY
SURREY GU15 3BA

viridiumlife.co.uk



Available here

Ten year new home warranty
provided by:

premier
guarantee

An award winning
development by:



www.hodsondevelopments.com

For further information, contact:

Romans
NEW HOMES

01276 66693

romans.co.uk



Viridium – Winner of Best Medium
Sized Development in the U.K.

SUBJECT TO CONTRACT Please note: statements contained within this brochure are believed to be correct, they are not to be regarded as statements or representations of fact, neither the selling agents or developer guarantee their accuracy and the specification can be altered by the developer at any time. This brochure does not form part of the contract. The floor plans are intended to serve only as a general guide to the appearance and layout of the development. Floor plans are not to scale. Any areas, measurements or distances are approximate. Purchasers must satisfy themselves of precise dimensions. The text, photographs and plans are for guidance only and are not necessarily comprehensive. August 2015.