

CHILMINGTON  
**LAKES**  
K E N T



# THE ARUNDEL

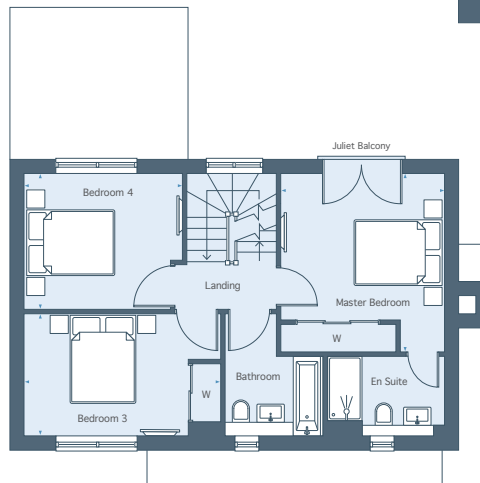
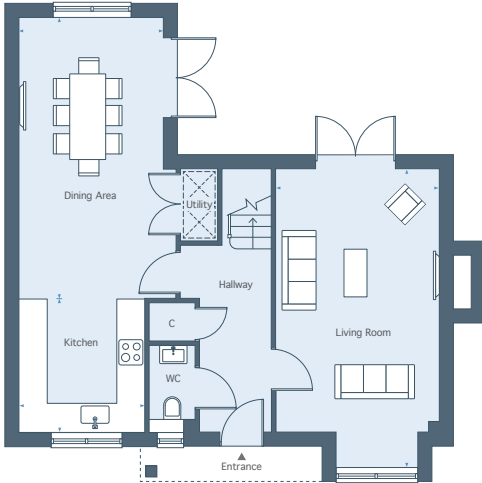
4 BEDROOM HOME

TOTAL AREA 1,785 sq ft 165.8 sq m

PLOTS 2, 3, 4, 5, 6, 69 & 70

# CHILMINGTON LAKES

KENT



## GROUND FLOOR

Living Room		
6.56m x 3.55m	21'6" x 11'7"	
Kitchen		
2.97m x 2.75m	9'9" x 9'0"	
Dining Area		
6.16m x 3.43m	20'2" x 11'3"	

## FIRST FLOOR

Master Bedroom		
3.91m x 3.58m	12'10" x 11'8"	
Bedroom 3		
4.29m x 2.68m	14'1" x 8'9"	
Bedroom 4		
3.46m x 2.98m	11'4" x 9'9"	

## SECOND FLOOR

Bedroom 2		
5.75m x 3.47m	18'10" x 11'5"	
Study		
3.58m x 2.26m	11'9" x 7'5"	

**Total Area** 1,785 sq ft 165.8 sq m

01233 225 701 | [chilmington.co.uk](http://chilmington.co.uk)

Please note, floor plans and dimensions are taken from architectural drawings and are for guidance only. Dimensions stated are within a tolerance of plus or minus 50mm. Overall dimensions are usually stated and there may be projections into these. With our continual improvement policy we constantly review our designs and specification to ensure we deliver the best product to our customers. Computer generated images not to scale. Finishes and materials may vary and landscaping is illustrative only. Kitchen layouts are indicative only and may change. To confirm specific details on our homes please ask your Sales Consultant. CHIL35/March 2020.



CHILMINGTON  
**LAKES**  
K E N T



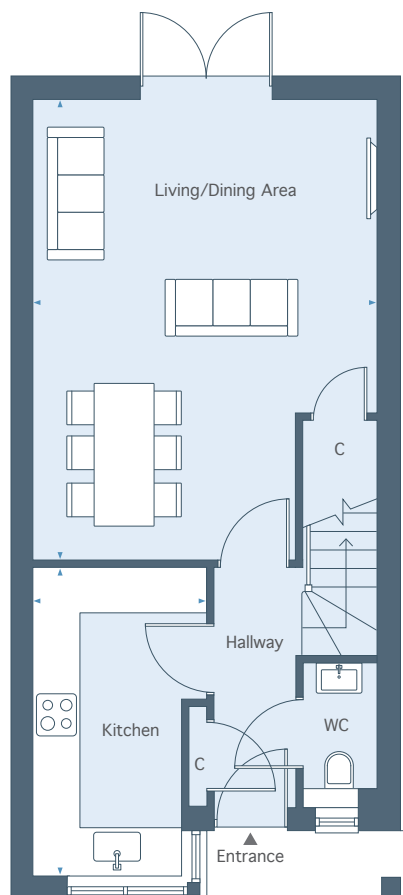
# THE MAPLE

3 BEDROOM HOME  
TOTAL AREA 1,371 sq ft 127.3 sq m

PLOTS 19, 20, 21 & 33

# CHILMINGTON LAKES

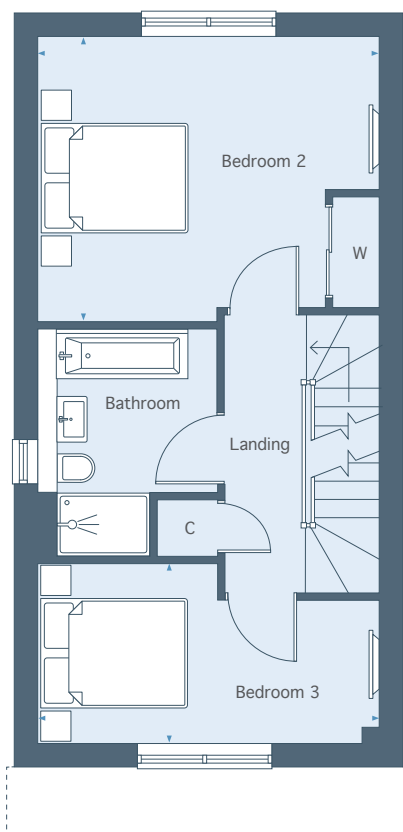
KENT



## GROUND FLOOR

Living/Dining Area  
6.08m x 4.50m    19'11" x 14'9"

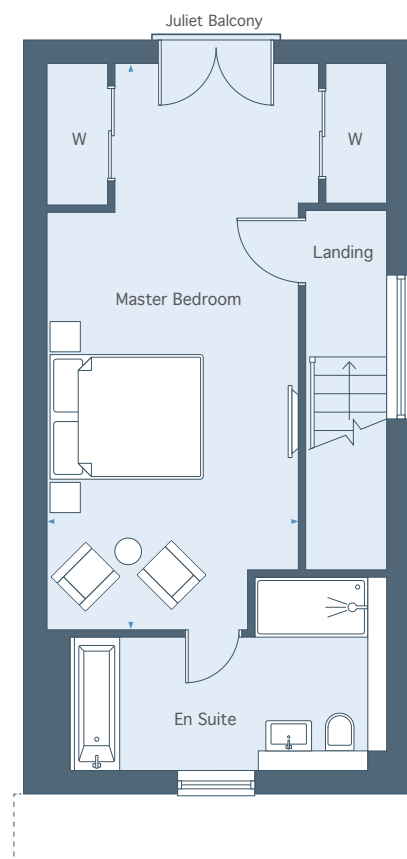
Kitchen  
4.05m x 2.27m    13'3" x 7'5"



## FIRST FLOOR

Bedroom 2  
4.50m x 3.77m    14'9" x 12'4"

Bedroom 3  
4.50m x 2.38m    14'9" x 7'9"



## SECOND FLOOR

Master Bedroom  
7.49m x 4.50m    24'7" x 14'9"

**Total Area** 1,371 sq ft 127.3 sq m

01233 225 701 | [chilmington.co.uk](http://chilmington.co.uk)

Please note, floor plans and dimensions are taken from architectural drawings and are for guidance only. Dimensions stated are within a tolerance of plus or minus 50mm. Overall dimensions are usually stated and there may be projections into these. With our continual improvement policy we constantly review our designs and specification to ensure we deliver the best product to our customers. Computer generated images not to scale. Finishes and materials may vary and landscaping is illustrative only. Kitchen layouts are indicative only and may change. To confirm specific details on our homes please ask your Sales Consultant. CHIL35/March 2020.



CHILMINGTON  
**LAKEs**  
K E N T



# THE RIVINGTON

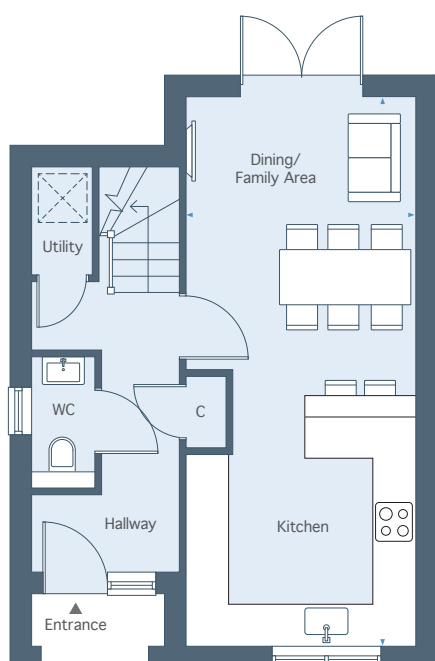
3 BEDROOM HOME

TOTAL AREA 1,303 sq ft 121 sq m

PLOTS 15, 16, 17, 22, 23, 31, 50, 55, 56 & 57

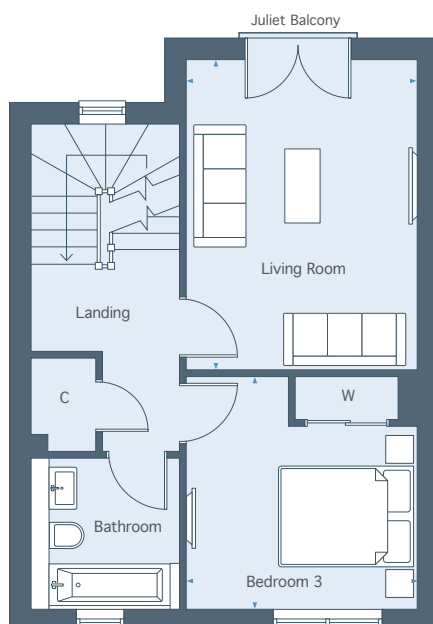
# CHILMINGTON LAKES

K E N T



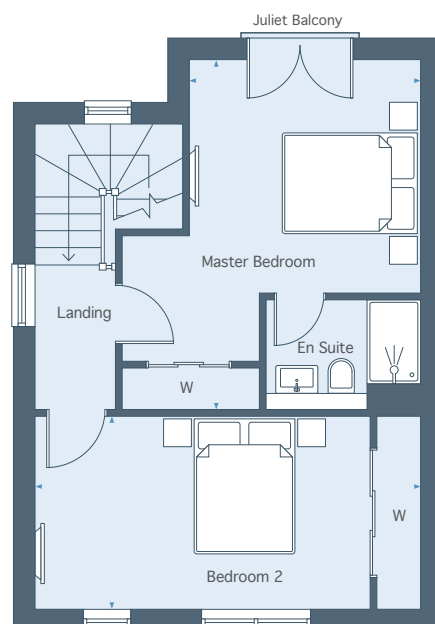
## GROUND FLOOR

Kitchen/Dining/Family Area  
7.88m x 3.27m 25'10" x 10'9"



## FIRST FLOOR

Living Room  
4.53m x 3.27m 14'10" x 10'9"  
Bedroom 3  
3.27m x 3.25m 10'9" x 10'8"



## SECOND FLOOR

Master Bedroom  
5.08m x 4.29m 16'7" x 14'0"  
Bedroom 2  
5.50m x 2.71m 18'0" x 8'10"

**Total Area** 1,303 sq ft 121 sq m

01233 225 701 | [chilmington.co.uk](http://chilmington.co.uk)

Please note, floor plans and dimensions are taken from architectural drawings and are for guidance only. Dimensions stated are within a tolerance of plus or minus 50mm. Overall dimensions are usually stated and there may be projections into these. With our continual improvement policy we constantly review our designs and specification to ensure we deliver the best product to our customers. Computer generated images not to scale. Finishes and materials may vary and landscaping is illustrative only. Kitchen layouts are indicative only and may change. To confirm specific details on our homes please ask your Sales Consultant. CHIL35/March 2020.



CHILMINGTON  
**LAKES**  
K E N T



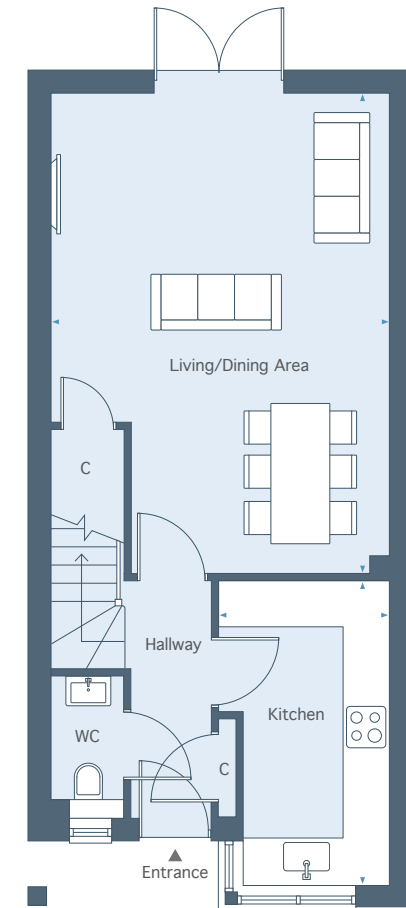
# THE LANGHAM

3 BEDROOM HOME  
TOTAL AREA 1,420 sq ft 132 sq m

PLOTS 28, 29, 30 & 32

# CHILMINGTON LAKES

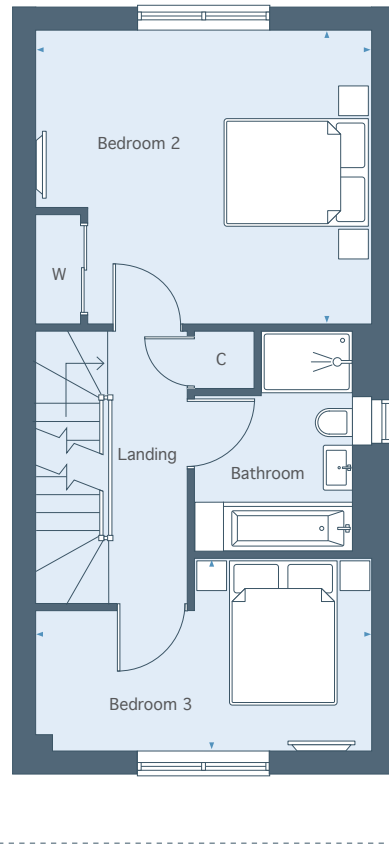
KENT



## GROUND FLOOR

Living/Dining Area  
6.41m x 4.50m    21'0" x 14'9"

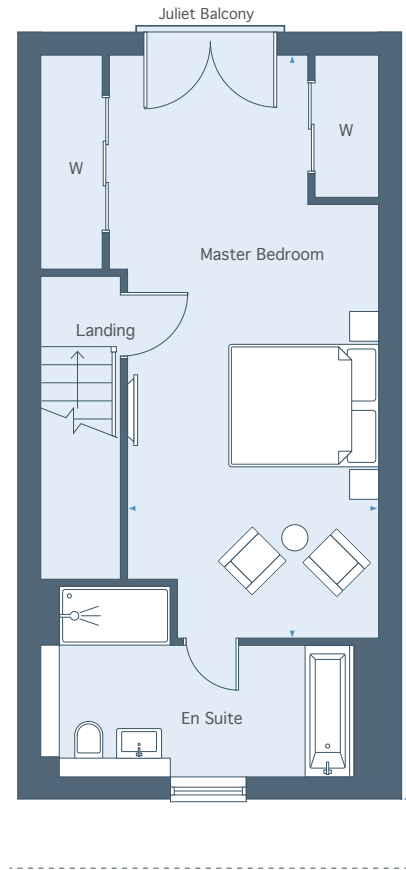
Kitchen  
4.05m x 2.27m    13'4" x 7'5"



## FIRST FLOOR

Bedroom 2  
4.50m x 3.93m    14'9" x 12'11"

Bedroom 3  
4.50m x 2.58m    14'9" x 8'5"



## SECOND FLOOR

Master Bedroom  
7.83m x 4.50m    25'8" x 14'9"

**Total Area** 1,420 sq ft 132 sq m

01233 225 701 | [chilmington.co.uk](http://chilmington.co.uk)

Please note, floor plans and dimensions are taken from architectural drawings and are for guidance only. Dimensions stated are within a tolerance of plus or minus 50mm. Overall dimensions are usually stated and there may be projections into these. With our continual improvement policy we constantly review our designs and specification to ensure we deliver the best product to our customers. Computer generated images not to scale. Finishes and materials may vary and landscaping is illustrative only. Kitchen layouts are indicative only and may change. To confirm specific details on our homes please ask your Sales Consultant. CHIL35/March 2020.



CHILMINGTON  
**LAKES**  
K E N T



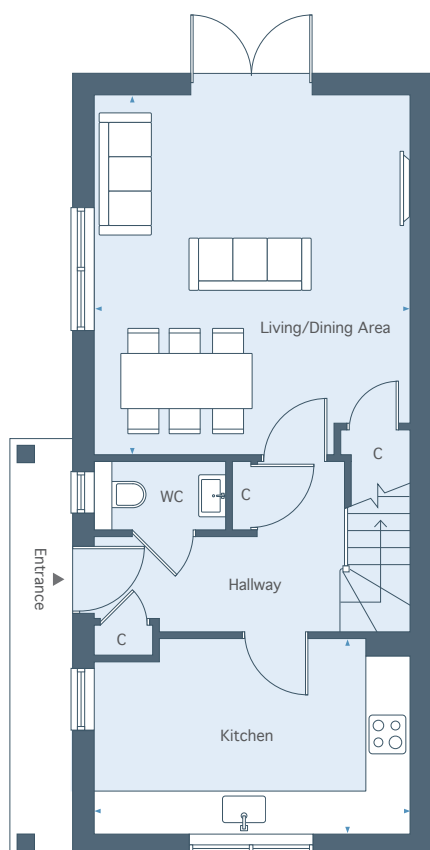
# THE TIFTON

3 BEDROOM HOME  
TOTAL AREA 1,456 sq ft 135.3 sq m

PLOT 18

# CHILMINGTON LAKES

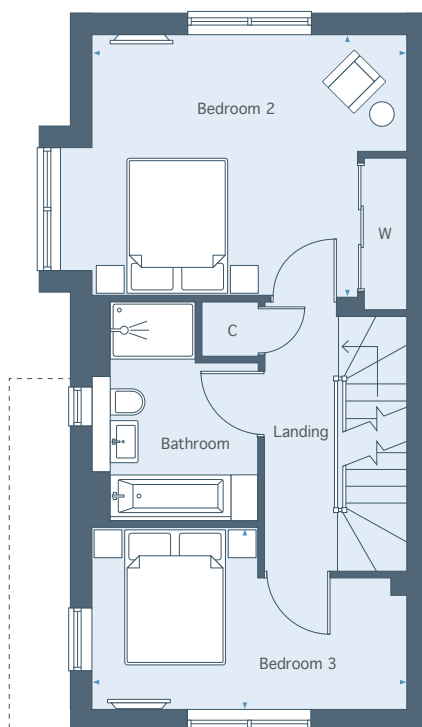
KENT



## GROUND FLOOR

Living/Dining Area  
5.14m x 4.50m    16'10" x 14'9"

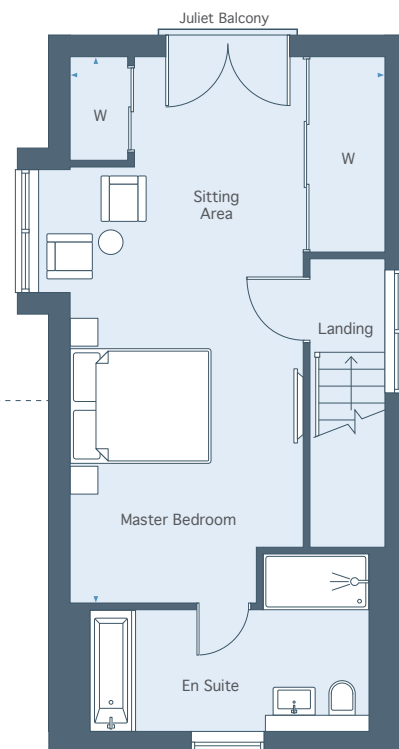
Kitchen  
4.50m x 2.28m    14'9" x 9'1"



## FIRST FLOOR

Bedroom 2  
4.50m x 3.93m    14'9" x 12'11"

Bedroom 3  
4.50m x 2.62m    14'9" x 8'7"



## SECOND FLOOR

Master Bedroom  
7.83m x 4.50m    25'8" x 14'9"

**Total Area** 1,456 sq ft 135.3 sq m

01233 225 701 | [chilmington.co.uk](http://chilmington.co.uk)

Please note, floor plans and dimensions are taken from architectural drawings and are for guidance only. Dimensions stated are within a tolerance of plus or minus 50mm. Overall dimensions are usually stated and there may be projections into these. With our continual improvement policy we constantly review our designs and specification to ensure we deliver the best product to our customers. Computer generated images not to scale. Finishes and materials may vary and landscaping is illustrative only. Kitchen layouts are indicative only and may change. To confirm specific details on our homes please ask your Sales Consultant. CHIL35/March 2020.



CHILMINGTON  
**LAKES**  
K E N T



# THE ASTON

3 BEDROOM HOME

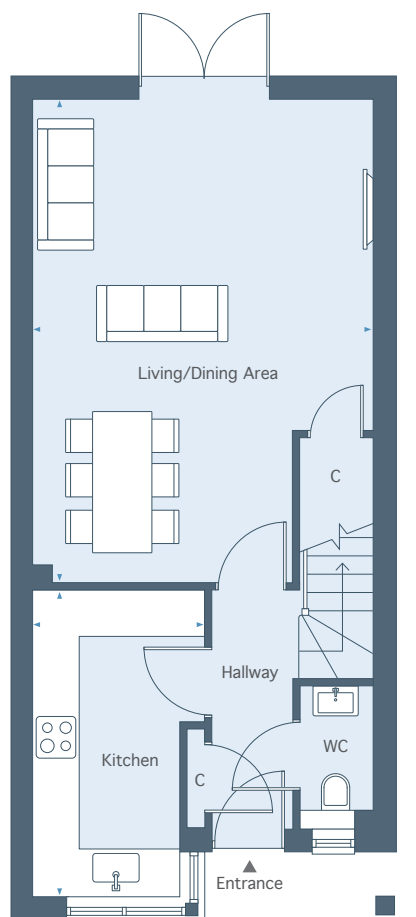
TOTAL AREA 1,346 sq ft 125 sq m

TOTAL AREA INCLUDING TERRACE 1,386 sq ft 128.7 sq m

PLOTS 25, 26, 53 & 54

# CHILMINGTON LAKES

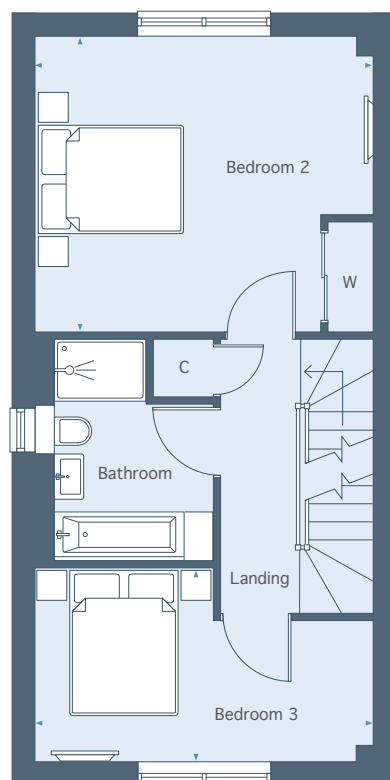
KENT



## GROUND FLOOR

Living/Dining Area  
6.41m x 4.50m    21'0" x 14'9"

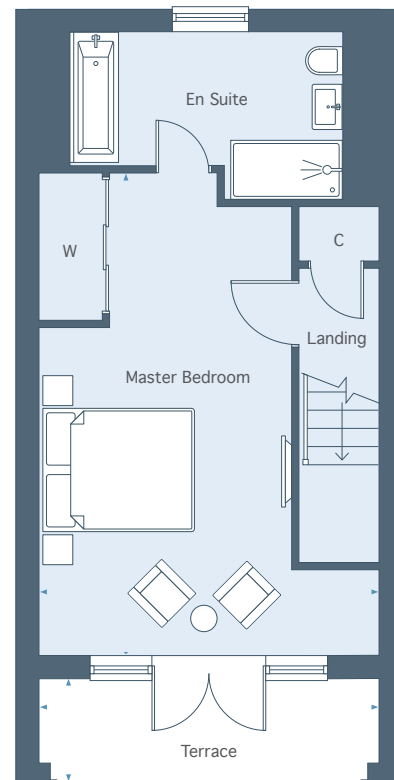
Kitchen  
4.05m x 2.28m    13'4" x 7'5"



## FIRST FLOOR

Bedroom 2  
4.50m x 3.93m    14'9" x 12'11"

Bedroom 3  
4.50m x 2.58m    14'9" x 8'5"



## SECOND FLOOR

Master Bedroom  
6.05m x 4.50m    19'10" x 14'9"

Terrace  
4.55m x 1.00m    14'11" x 3'3"

**Total Area** 1,346 sq ft 125 sq m  
**Total Area including terrace** 1,386 sq ft 128.7 sq m

01233 225 701 | [chilmington.co.uk](http://chilmington.co.uk)

Please note, floor plans and dimensions are taken from architectural drawings and are for guidance only. Dimensions stated are within a tolerance of plus or minus 50mm. Overall dimensions are usually stated and there may be projections into these. With our continual improvement policy we constantly review our designs and specification to ensure we deliver the best product to our customers. Computer generated images not to scale. Finishes and materials may vary and landscaping is illustrative only. Kitchen layouts are indicative only and may change. To confirm specific details on our homes please ask your Sales Consultant. CHIL35/March 2020.



CHILMINGTON  
**LAKEs**  
K E N T



# THE OAKS

4 BEDROOM HOME  
TOTAL AREA 1,456 sq ft 135.3 sq m

PLOTS 14, 24, 27, 51, 52 & 68

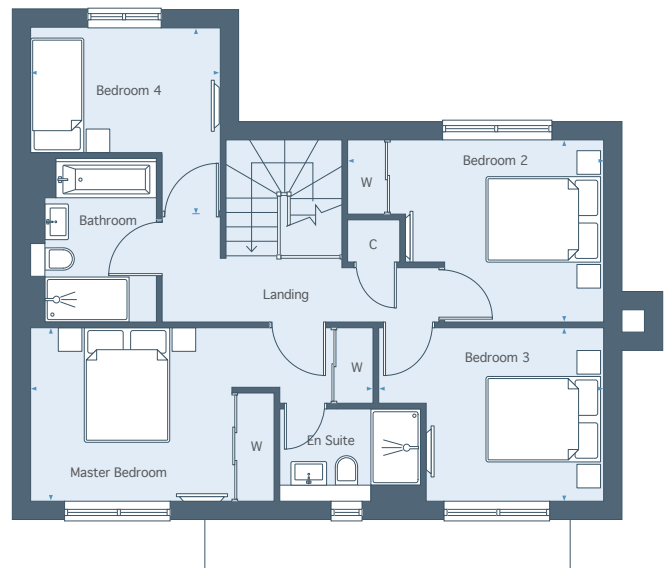
# CHILMINGTON LAKES

KENT



## GROUND FLOOR

Living Room	
6.87m x 4.27m	22'7" x 14'0"
Kitchen/Dining Area	
7.80m x 3.16m	26'2" x 10'4"
Utility Room	
1.88m x 1.76m	6'2" x 5'9"



## FIRST FLOOR

Master Bedroom	
4.12m x 2.91m	13'6" x 9'7"
Bedroom 2	
4.50m x 2.91m	14'9" x 9'7"
Bedroom 3	
3.78m x 2.91m	12'5" x 9'7"
Bedroom 4	
3.20m x 3.12m	10'6" x 10'3"

**Total Area** 1,456 sq ft 135.3 sq m

01233 225 701 | [chilmington.co.uk](http://chilmington.co.uk)

Please note, floor plans and dimensions are taken from architectural drawings and are for guidance only. Dimensions stated are within a tolerance of plus or minus 50mm. Overall dimensions are usually stated and there may be projections into these. With our continual improvement policy we constantly review our designs and specification to ensure we deliver the best product to our customers. Computer generated images not to scale. Finishes and materials may vary and landscaping is illustrative only. Kitchen layouts are indicative only and may change. To confirm specific details on our homes please ask your Sales Consultant. CHIL35/March 2020.



CHILMINGTON  
**LAKES**  
K E N T



# THE WINDSOR

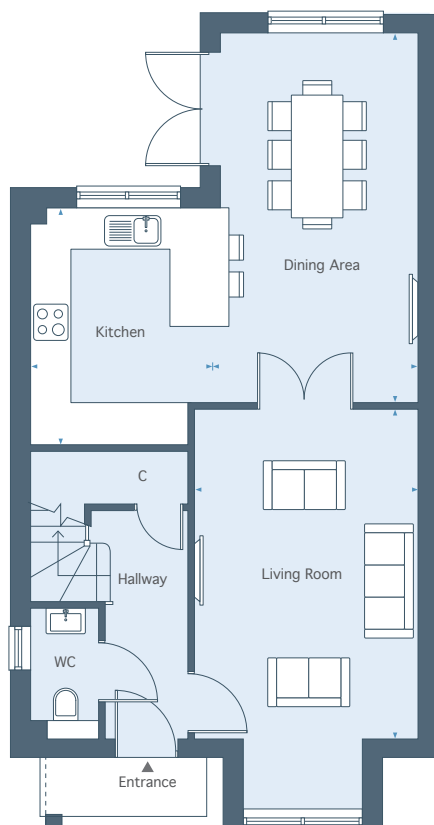
4 BEDROOM HOME

TOTAL AREA 1,654 sq ft 153.6 sq m

PLOTS 7, 8, 9, 10, 12 & 13

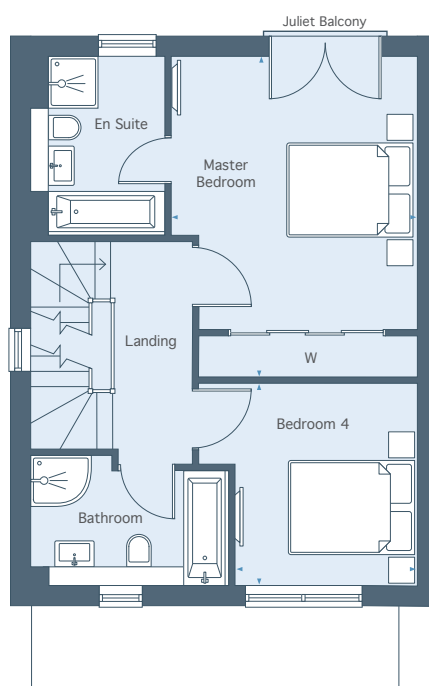
# CHILMINGTON LAKES

KENT



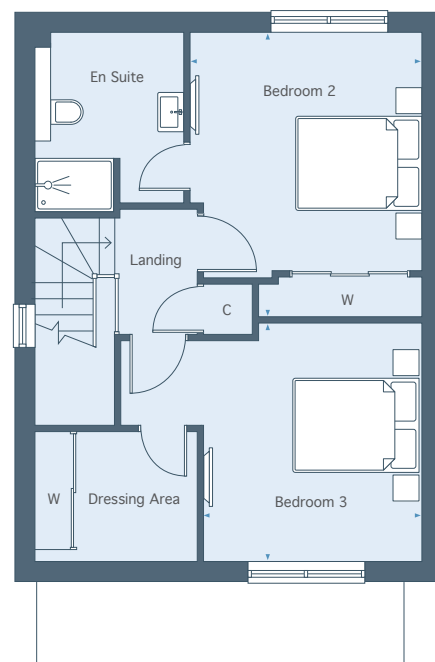
## GROUND FLOOR

Living Room		
6.14m x 3.39m	20'2" x 11'1"	
Kitchen		
3.60m x 2.93m	11'9" x 9'7"	
Dining Area		
5.65m x 2.98m	18'6" x 9'9"	



## FIRST FLOOR

Master Bedroom		
4.90m x 3.85m	16'1" x 12'7"	
Bedroom 4		
3.35m x 3.11m	11'0" x 10'3"	



## SECOND FLOOR

Bedroom 2		
4.16m x 3.59m	13'8" x 11'8"	
Bedroom 3		
3.85m x 3.35m	12'8" x 11'0"	

**Total Area** 1,654 sq ft 153.6 sq m

01233 225 701 | [chilmington.co.uk](http://chilmington.co.uk)

Please note, floor plans and dimensions are taken from architectural drawings and are for guidance only. Dimensions stated are within a tolerance of plus or minus 50mm. Overall dimensions are usually stated and there may be projections into these. With our continual improvement policy we constantly review our designs and specification to ensure we deliver the best product to our customers. Computer generated images not to scale. Finishes and materials may vary and landscaping is illustrative only. Kitchen layouts are indicative only and may change. To confirm specific details on our homes please ask your Sales Consultant. CHIL35/March 2020.



CHILMINGTON  
**LAKES**  
K E N T



# THE CAMBRIDGE

4 BEDROOM HOME

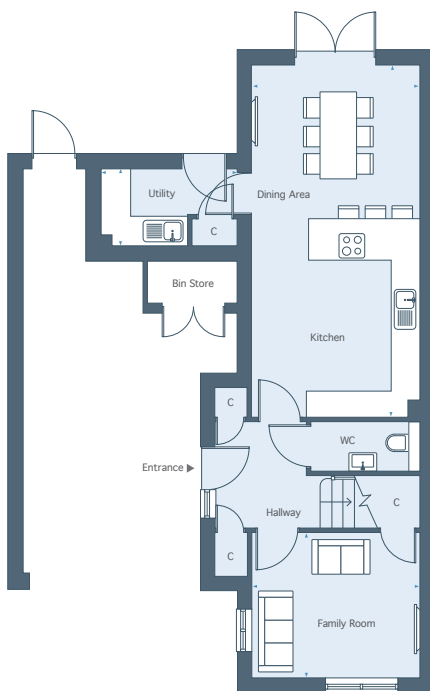
TOTAL AREA 1,863 sq ft 173.1 sq m

TOTAL AREA INCLUDING TERRACES 2,058 sq ft 191.6 sq m

PLOTS 148, 149, 150, 151, 152 & 153

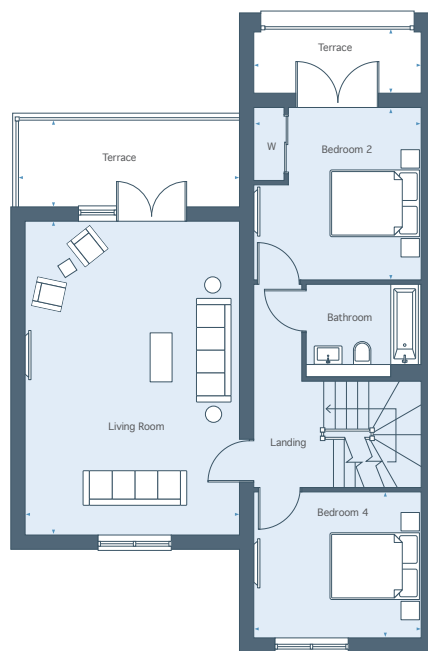
# CHILMINGTON LAKES

KENT



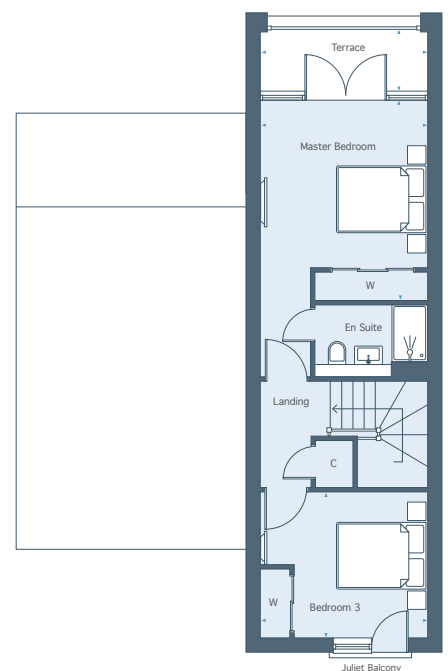
## GROUND FLOOR

Kitchen/Dining Area	7.64m x 3.61m	25'1" x 11'10"
Family Room	3.61m x 3.16m	11'10" x 10'4"
Utility Room	2.93m x 1.67m	9'8" x 5'6"



## FIRST FLOOR

Living Room	6.76m x 4.60m	22'2" x 15'1"
Terrace	4.80m x 1.87m	15'9" x 6'1"
Bedroom 2	3.72m x 3.61m	12'2" x 11'10"
Terrace	3.66m x 1.21m	12'0" x 3'11"
Bedroom 4	3.61m x 3.14m	11'10" x 10'4"



## SECOND FLOOR

Master Bedroom	4.26m x 3.61m	14'0" x 11'10"
Terrace	3.66m x 1.41m	12'0" x 4'7"
Bedroom 3	3.61m x 3.14m	11'10" x 10'4"

**Total Area** 1,863 sq ft 173.1 sq m  
**Total Area including terraces** 2,058 sq ft 191.6 sq m

01233 225 701 | [chilmington.co.uk](http://chilmington.co.uk)

Please note, floor plans and dimensions are taken from architectural drawings and are for guidance only. Dimensions stated are within a tolerance of plus or minus 50mm. Overall dimensions are usually stated and there may be projections into these. With our continual improvement policy we constantly review our designs and specification to ensure we deliver the best product to our customers. Computer generated images not to scale. Finishes and materials may vary and landscaping is illustrative only. Kitchen layouts are indicative only and may change. To confirm specific details on our homes please ask your Sales Consultant. CHIL35/March 2020.



CHILMINGTON  
**LAKES**  
K E N T



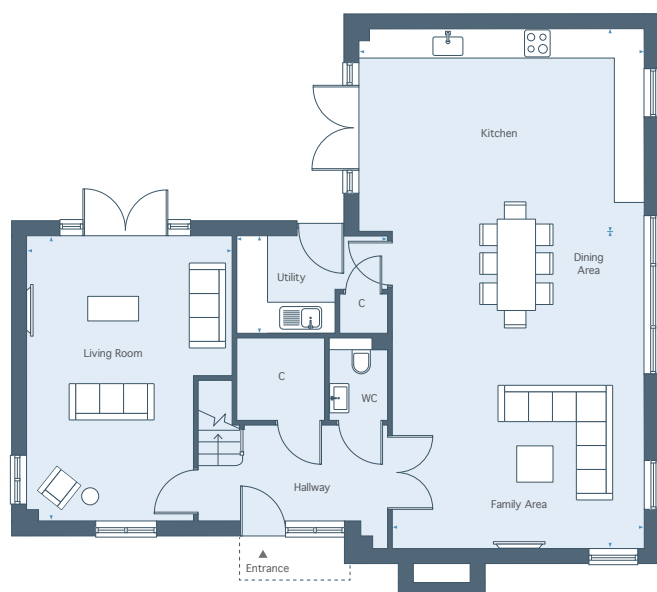
# THE BURLINGTON

5 BEDROOM HOME  
TOTAL AREA 2,210 sq ft 206 sq m

PLOTS 1 & 11

# CHILMINGTON LAKES

KENT



## GROUND FLOOR

Kitchen/Dining Area	5.86m x 4.13m	19'3" x 13'6"
Family Area	6.57m x 5.16m	21'7" x 17'0"
Living Room	5.86m x 4.20m	19'3" x 13'9"
Utility Room	3.06m x 1.99m	10'1" x 6'6"



## FIRST FLOOR

Master Bedroom	4.00m x 3.44m	13'2" x 11'4"
Dressing Area	3.23m x 2.90m	10'7" x 9'6"
Bedroom 2	5.86m x 3.63m	19'3" x 11'11"
Bedroom 3	4.70m x 3.31m	15'5" x 10'11"
Bedroom 4	4.70m x 2.21m	15'5" x 7'3"
Bedroom 5	4.70m x 2.17m	15'5" x 7'2"

**Total Area** 2,210 sq ft 206 sq m

01233 225 701 | [chilmington.co.uk](http://chilmington.co.uk)

Please note, floor plans and dimensions are taken from architectural drawings and are for guidance only. Dimensions stated are within a tolerance of plus or minus 50mm. Overall dimensions are usually stated and there may be projections into these. With our continual improvement policy we constantly review our designs and specification to ensure we deliver the best product to our customers. Computer generated images not to scale. Finishes and materials may vary and landscaping is illustrative only. Kitchen layouts are indicative only and may change. To confirm specific details on our homes please ask your Sales Consultant. CHIL35/March 2020.