

CHILMINGTON
LAKEs
KENT



THE OAKS

4 BEDROOM HOME
TOTAL AREA 1,456 sq ft 135.3 sq m

PLOT 34

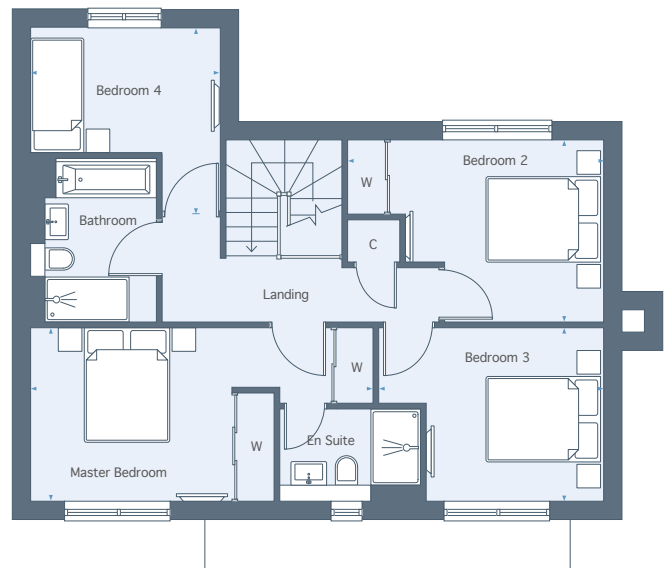
CHILMINGTON LAKES

KENT



GROUND FLOOR

Living Room	6.87m x 4.27m	22'7" x 14'0"
Kitchen/Dining Area	7.80m x 3.16m	26'2" x 10'4"
Utility Room	1.88m x 1.76m	6'2" x 5'9"



FIRST FLOOR

Master Bedroom	4.12m x 2.91m	13'6" x 9'7"
Bedroom 2	4.50m x 2.91m	14'9" x 9'7"
Bedroom 3	3.78m x 2.91m	12'5" x 9'7"
Bedroom 4	3.20m x 3.12m	10'6" x 10'3"

Total Area 1,456 sq ft 135.3 sq m

01233 225 701 | chilmington.co.uk

Please note, floor plans and dimensions are taken from architectural drawings and are for guidance only. Dimensions stated are within a tolerance of plus or minus 50mm. Overall dimensions are usually stated and there may be projections into these. With our continual improvement policy we constantly review our designs and specification to ensure we deliver the best product to our customers. Computer generated images not to scale. Finishes and materials may vary and landscaping is illustrative only. Kitchen layouts are indicative only and may change. To confirm specific details on our homes please ask your Sales Consultant.