

CHILMINGTON  
**LAKES**  
KENT



# THE MARLOWE

3 BEDROOM HOME

TOTAL AREA 1,420 sq ft 132 sq m

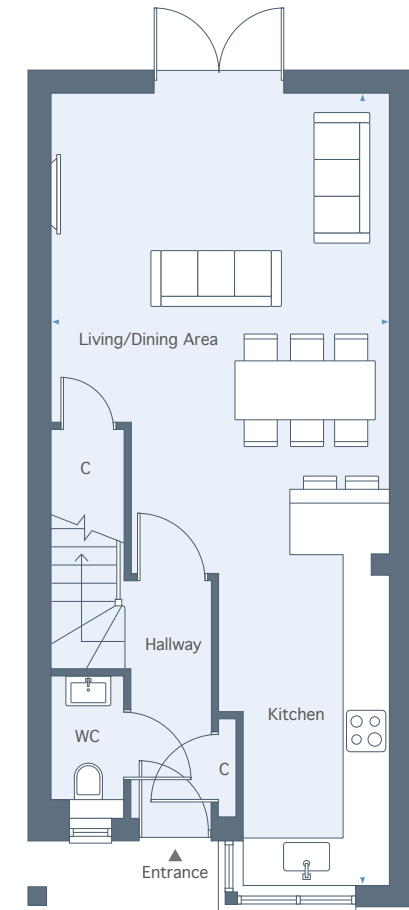
PLOTS 38, 39, 59, 60, 64, 65, 92 & 93



**HODSON**  
DEVELOPMENTS

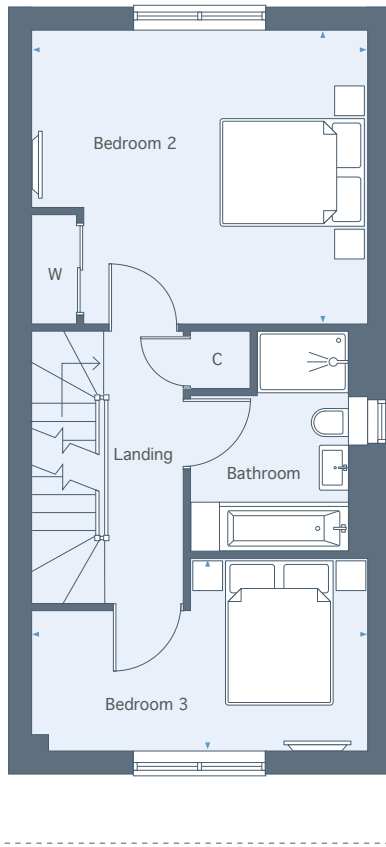
# CHILMINGTON LAKES

KENT



## GROUND FLOOR

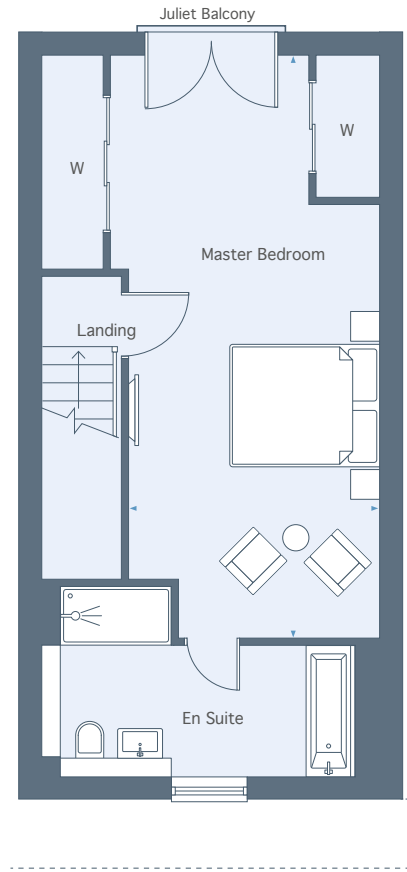
Living/Dining Area/Kitchen  
10.58m x 4.50m    34'9" x 14'9"



## FIRST FLOOR

Bedroom 2  
4.50m x 3.93m    14'9" x 12'11"

Bedroom 3  
4.50m x 2.58m    14'9" x 8'5"



## SECOND FLOOR

Master Bedroom  
7.83m x 4.50m    25'8" x 14'9"

**Total Area** 1,420 sq ft 132 sq m

01233 225 701 | [chilmington.co.uk](http://chilmington.co.uk)

Please note, floor plans and dimensions are taken from architectural drawings and are for guidance only. Dimensions stated are within a tolerance of plus or minus 50mm. Overall dimensions are usually stated and there may be projections into these. With our continual improvement policy we constantly review our designs and specification to ensure we deliver the best product to our customers. Computer generated images not to scale. Finishes and materials may vary and landscaping is illustrative only. Kitchen layouts are indicative only and may change. To confirm specific details on our homes please ask your Sales Consultant.