

CHILMINGTON
LAKES
KENT



THE RIVINGTON

3 BEDROOM HOME

TOTAL AREA 1,303 sq ft 121 sq m

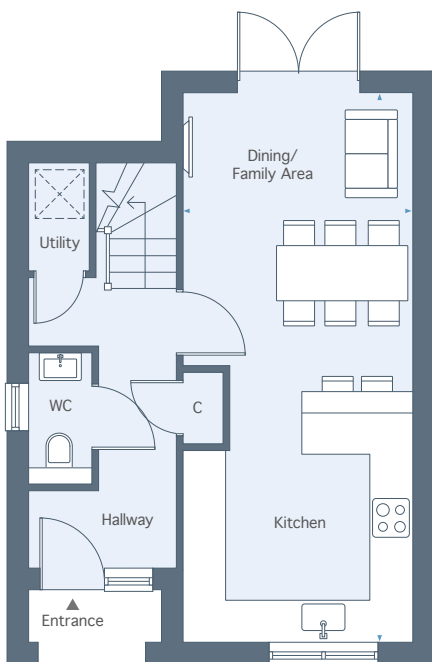
PLOTS 35 & 62



HODSON
DEVELOPMENTS

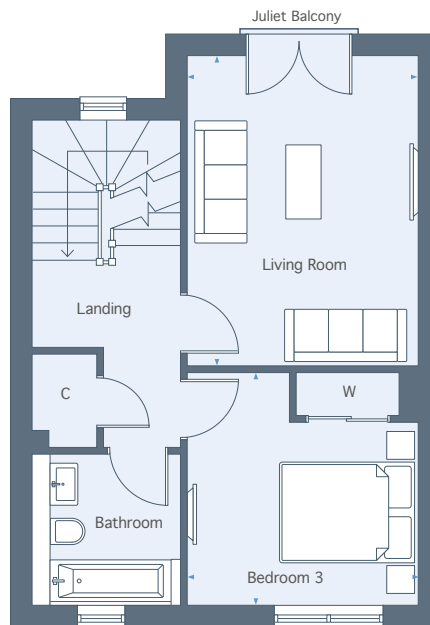
CHILMINGTON LAKES

KENT



GROUND FLOOR

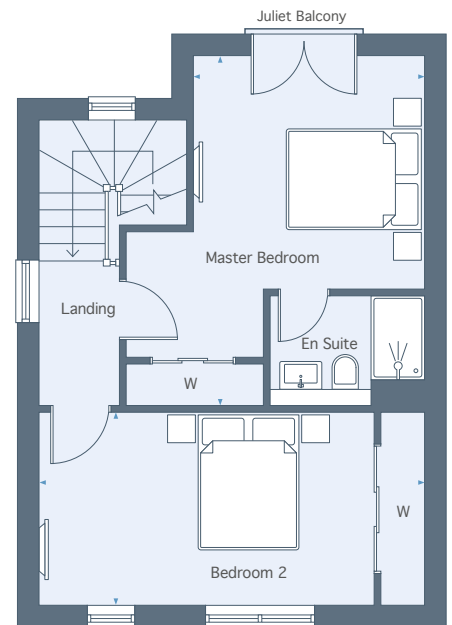
Kitchen/Dining/Family Area
7.88m x 3.27m 25'10" x 10'9"



FIRST FLOOR

Living Room
4.53m x 3.27m 14'10" x 10'9"

Bedroom 3
3.27m x 3.25m 10'9" x 10'8"



SECOND FLOOR

Master Bedroom
5.08m x 4.29m 16'7" x 14'0"

Bedroom 2
5.50m x 2.71m 18'0" x 8'10"

Total Area 1,303 sq ft 121 sq m

01233 225 701 | chilmington.co.uk

Please note, floor plans and dimensions are taken from architectural drawings and are for guidance only. Dimensions stated are within a tolerance of plus or minus 50mm. Overall dimensions are usually stated and there may be projections into these. With our continual improvement policy we constantly review our designs and specification to ensure we deliver the best product to our customers. Computer generated images not to scale. Finishes and materials may vary and landscaping is illustrative only. Kitchen layouts are indicative only and may change. To confirm specific details on our homes please ask your Sales Consultant.