

CHILMINGTON
LAKES
K E N T



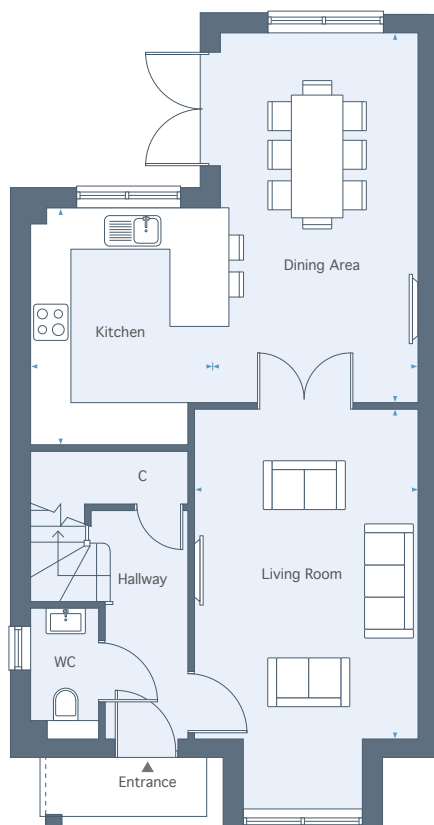
THE WINDSOR

4 BEDROOM HOME
TOTAL AREA 1,654 sq ft 153.6 sq m

PLOTS 48 & 49

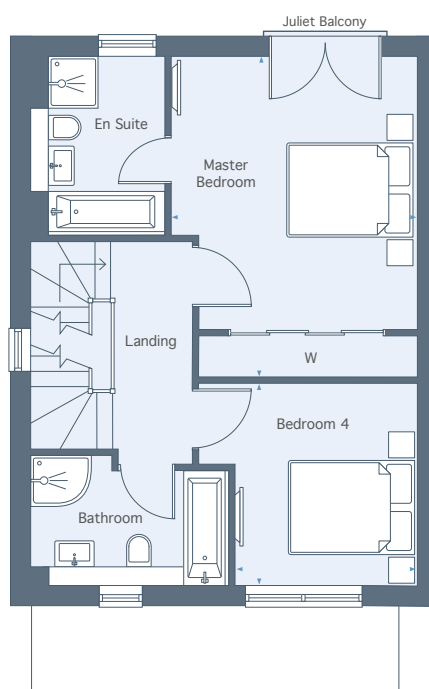
CHILMINGTON LAKES

KENT



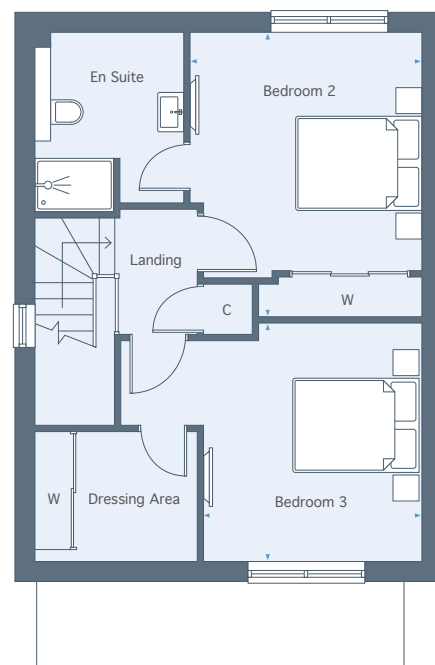
GROUND FLOOR

Living Room	6.14m x 3.39m	20'2" x 11'1"
Kitchen	3.60m x 2.93m	11'9" x 9'7"
Dining Area	5.65m x 2.98m	18'6" x 9'9"



FIRST FLOOR

Master Bedroom	4.90m x 3.85m	16'1" x 12'7"
Bedroom 4	3.35m x 3.11m	11'0" x 10'3"



SECOND FLOOR

Bedroom 2	4.16m x 3.59m	13'8" x 11'8"
Bedroom 3	3.85m x 3.35m	12'8" x 11'0"

Total Area 1,654 sq ft 153.6 sq m

01233 225 701 | chilmington.co.uk

Please note, floor plans and dimensions are taken from architectural drawings and are for guidance only. Dimensions stated are within a tolerance of plus or minus 50mm. Overall dimensions are usually stated and there may be projections into these. With our continual improvement policy we constantly review our designs and specification to ensure we deliver the best product to our customers. Computer generated images not to scale. Finishes and materials may vary and landscaping is illustrative only. Kitchen layouts are indicative only and may change. To confirm specific details on our homes please ask your Sales Consultant.

CHILMINGTON
LAKEs
K E N T



THE OAKS

4 BEDROOM HOME
TOTAL AREA 1,456 sq ft 135.3 sq m

PLOT 34

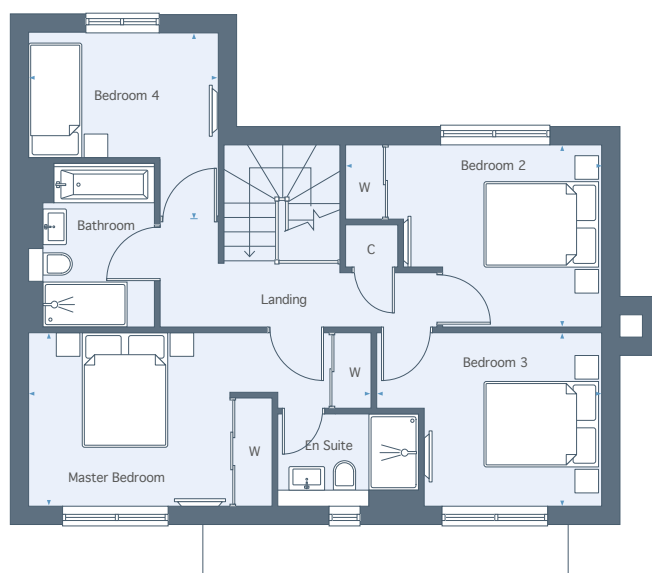
CHILMINGTON LAKES

KENT



GROUND FLOOR

Living Room	
6.87m x 4.27m	22'7" x 14'0"
Kitchen/Dining Area	
7.80m x 3.16m	26'2" x 10'4"
Utility Room	
1.88m x 1.76m	6'2" x 5'9"



FIRST FLOOR

Master Bedroom	
4.12m x 2.91m	13'6" x 9'7"
Bedroom 2	
4.50m x 2.91m	14'9" x 9'7"
Bedroom 3	
3.78m x 2.91m	12'5" x 9'7"
Bedroom 4	
3.20m x 3.12m	10'6" x 10'3"

Total Area 1,456 sq ft 135.3 sq m

01233 225 701 | chilmington.co.uk

Please note, floor plans and dimensions are taken from architectural drawings and are for guidance only. Dimensions stated are within a tolerance of plus or minus 50mm. Overall dimensions are usually stated and there may be projections into these. With our continual improvement policy we constantly review our designs and specification to ensure we deliver the best product to our customers. Computer generated images not to scale. Finishes and materials may vary and landscaping is illustrative only. Kitchen layouts are indicative only and may change. To confirm specific details on our homes please ask your Sales Consultant.

CHILMINGTON
LAKES
K E N T



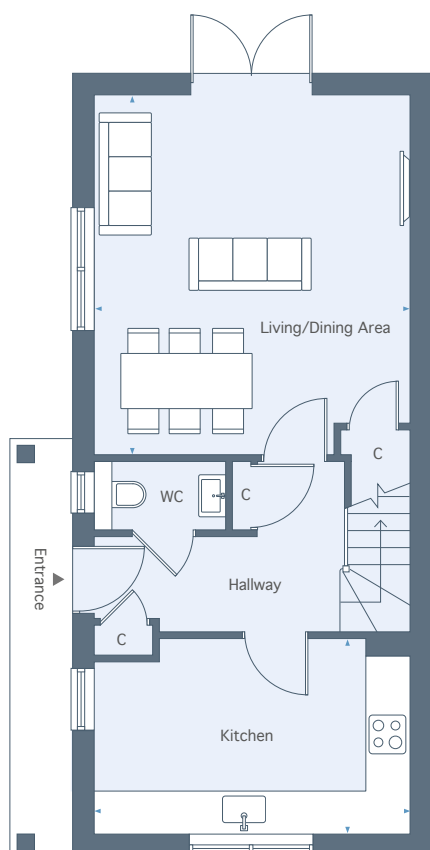
THE TIFTON

3 BEDROOM HOME
TOTAL AREA 1,456 sq ft 135.3 sq m

PLOTS 36 & 91

CHILMINGTON LAKES

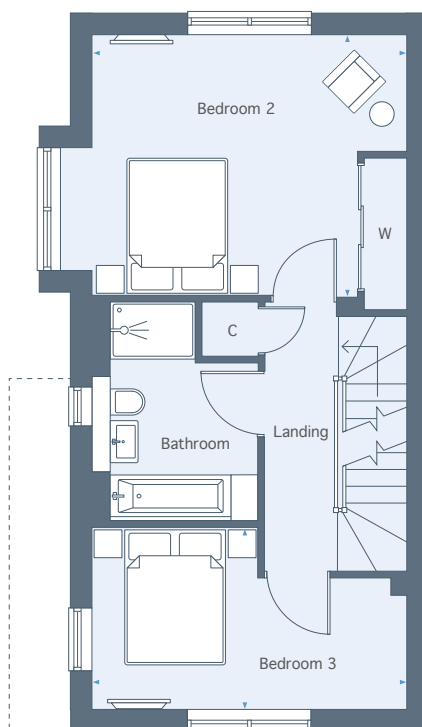
KENT



GROUND FLOOR

Living/Dining Area
5.14m x 4.50m 16'10" x 14'9"

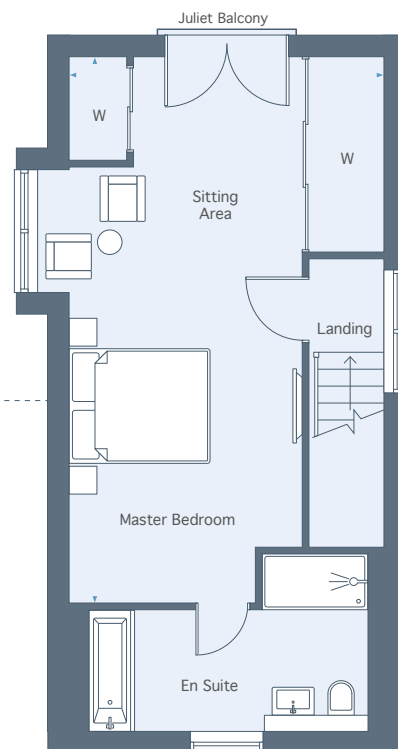
Kitchen
4.50m x 2.28m 14'9" x 9'1"



FIRST FLOOR

Bedroom 2
4.50m x 3.93m 14'9" x 12'11"

Bedroom 3
4.50m x 2.62m 14'9" x 8'7"



SECOND FLOOR

Master Bedroom
7.83m x 4.50m 25'8" x 14'9"

Total Area 1,456 sq ft 135.3 sq m

01233 225 701 | chilmington.co.uk

Please note, floor plans and dimensions are taken from architectural drawings and are for guidance only. Dimensions stated are within a tolerance of plus or minus 50mm. Overall dimensions are usually stated and there may be projections into these. With our continual improvement policy we constantly review our designs and specification to ensure we deliver the best product to our customers. Computer generated images not to scale. Finishes and materials may vary and landscaping is illustrative only. Kitchen layouts are indicative only and may change. To confirm specific details on our homes please ask your Sales Consultant.

CHILMINGTON
LAKES
K E N T



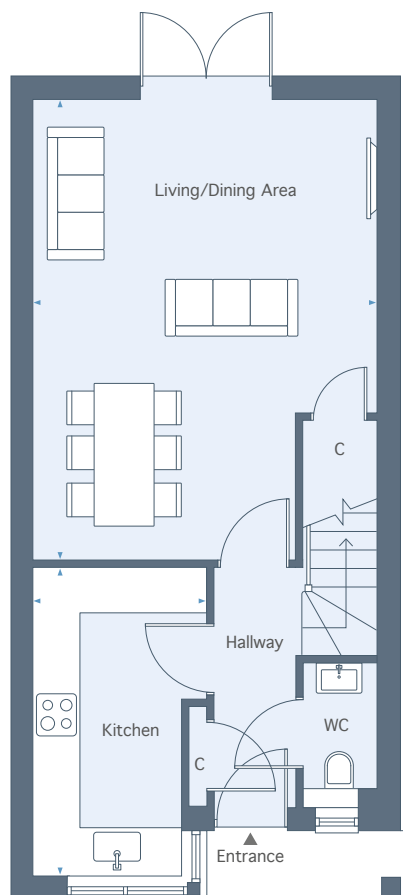
THE MAPLE

3 BEDROOM HOME
TOTAL AREA 1,371 sq ft 127.3 sq m

PLOTS 41, 42, 87, 88, 89 & 90

CHILMINGTON LAKES

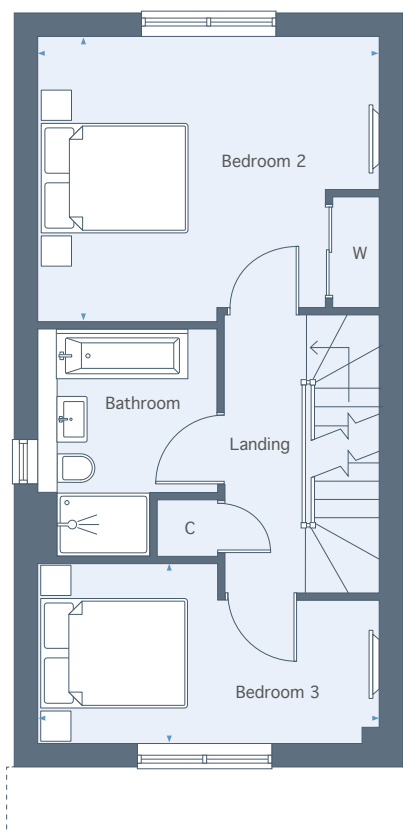
KENT



GROUND FLOOR

Living/Dining Area
6.08m x 4.50m 19'11" x 14'9"

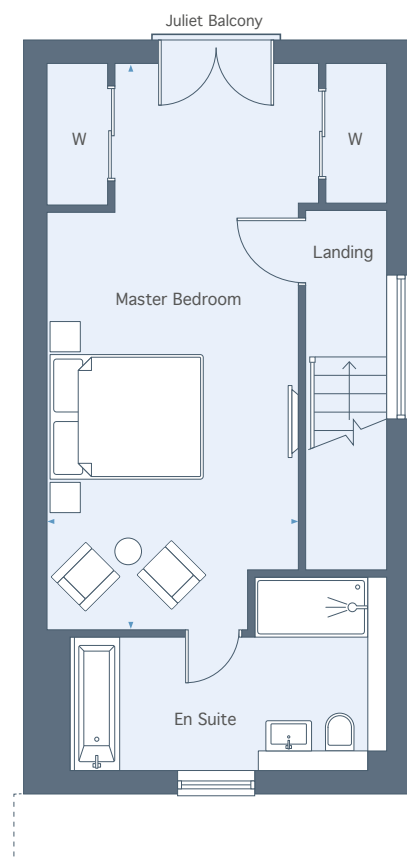
Kitchen
4.05m x 2.27m 13'3" x 7'5"



FIRST FLOOR

Bedroom 2
4.50m x 3.77m 14'9" x 12'4"

Bedroom 3
4.50m x 2.38m 14'9" x 7'9"



SECOND FLOOR

Master Bedroom
7.49m x 4.50m 24'7" x 14'9"

Total Area 1,371 sq ft 127.3 sq m

01233 225 701 | chilmington.co.uk

Please note, floor plans and dimensions are taken from architectural drawings and are for guidance only. Dimensions stated are within a tolerance of plus or minus 50mm. Overall dimensions are usually stated and there may be projections into these. With our continual improvement policy we constantly review our designs and specification to ensure we deliver the best product to our customers. Computer generated images not to scale. Finishes and materials may vary and landscaping is illustrative only. Kitchen layouts are indicative only and may change. To confirm specific details on our homes please ask your Sales Consultant.

CHILMINGTON
LAKEs
K E N T



THE RIVINGTON

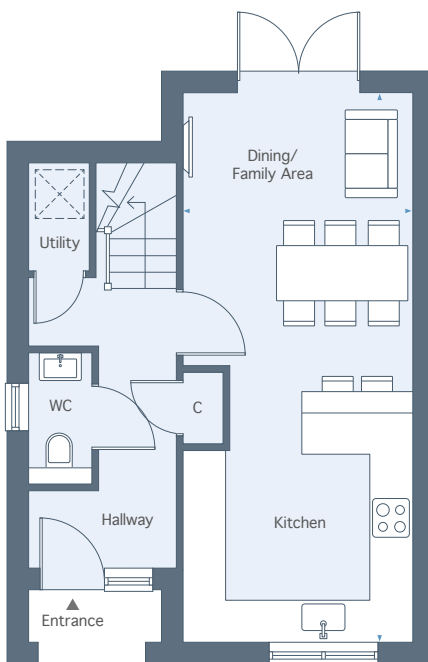
3 BEDROOM HOME

TOTAL AREA 1,303 sq ft 121 sq m

PLOTS 35 & 62

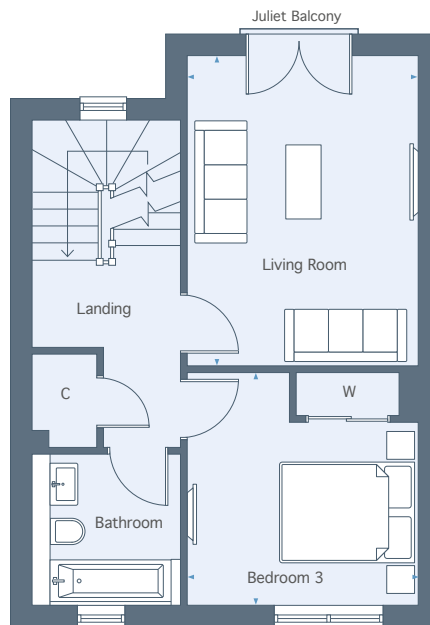
CHILMINGTON LAKES

KENT



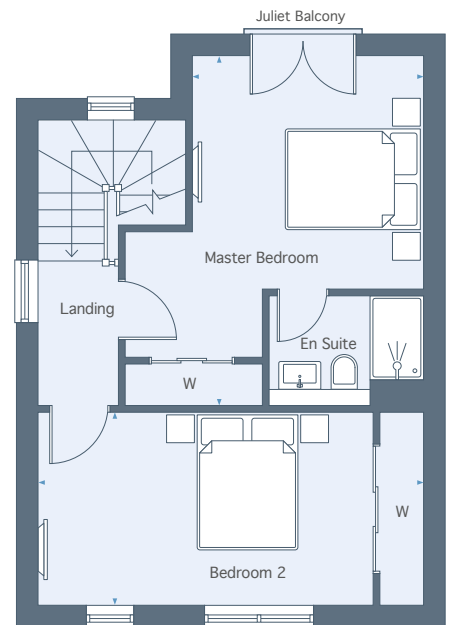
GROUND FLOOR

Kitchen/Dining/Family Area
7.88m x 3.27m 25'10" x 10'9"



FIRST FLOOR

Living Room
4.53m x 3.27m 14'10" x 10'9"
Bedroom 3
3.27m x 3.25m 10'9" x 10'8"



SECOND FLOOR

Master Bedroom
5.08m x 4.29m 16'7" x 14'0"
Bedroom 2
5.50m x 2.71m 18'0" x 8'10"

Total Area 1,303 sq ft 121 sq m

01233 225 701 | chilmington.co.uk

Please note, floor plans and dimensions are taken from architectural drawings and are for guidance only. Dimensions stated are within a tolerance of plus or minus 50mm. Overall dimensions are usually stated and there may be projections into these. With our continual improvement policy we constantly review our designs and specification to ensure we deliver the best product to our customers. Computer generated images not to scale. Finishes and materials may vary and landscaping is illustrative only. Kitchen layouts are indicative only and may change. To confirm specific details on our homes please ask your Sales Consultant.

CHILMINGTON
LAKES
K E N T



THE LANGHAM

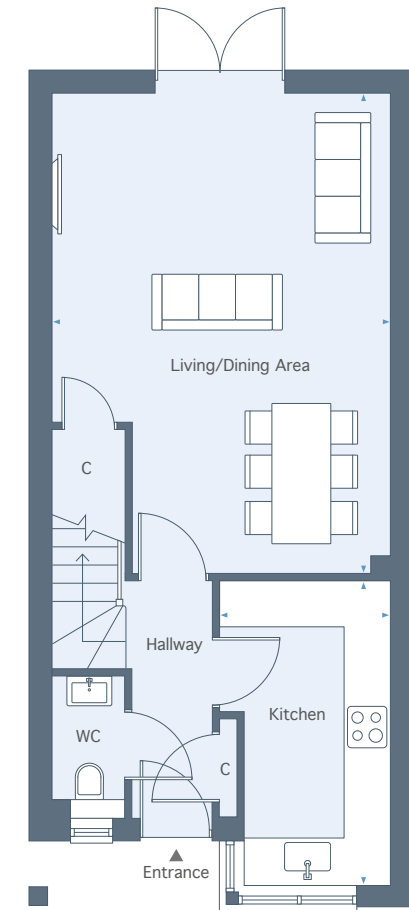
3 BEDROOM HOME

TOTAL AREA 1,420 sq ft 132 sq m

PLOTS 37, 40, 58, 61, 63, 66, 67 & 94

CHILMINGTON LAKES

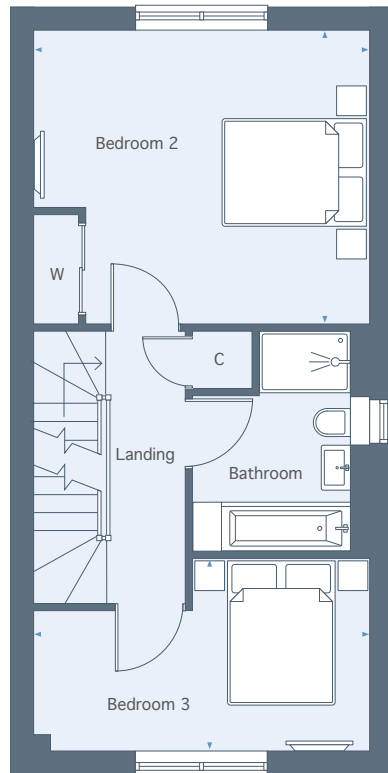
KENT



GROUND FLOOR

Living/Dining Area
6.41m x 4.50m 21'0" x 14'9"

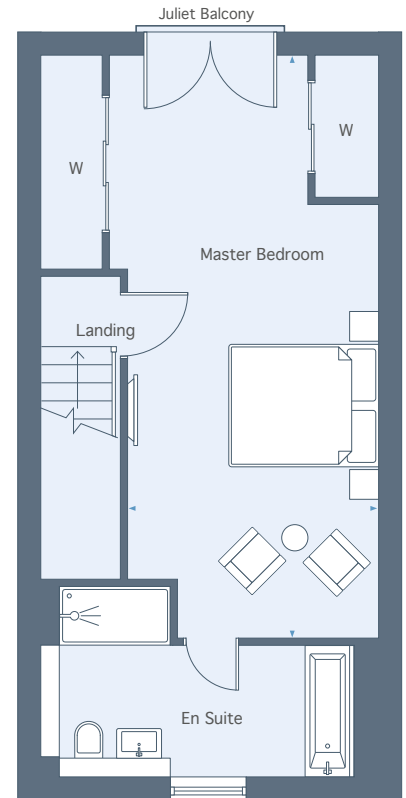
Kitchen
4.05m x 2.27m 13'4" x 7'5"



FIRST FLOOR

Bedroom 2
4.50m x 3.93m 14'9" x 12'11"

Bedroom 3
4.50m x 2.58m 14'9" x 8'5"



SECOND FLOOR

Master Bedroom
7.83m x 4.50m 25'8" x 14'9"

Total Area 1,420 sq ft 132 sq m

01233 225 701 | chilmington.co.uk

Please note, floor plans and dimensions are taken from architectural drawings and are for guidance only. Dimensions stated are within a tolerance of plus or minus 50mm. Overall dimensions are usually stated and there may be projections into these. With our continual improvement policy we constantly review our designs and specification to ensure we deliver the best product to our customers. Computer generated images not to scale. Finishes and materials may vary and landscaping is illustrative only. Kitchen layouts are indicative only and may change. To confirm specific details on our homes please ask your Sales Consultant.

CHILMINGTON
LAKES
K E N T



THE MARLOWE

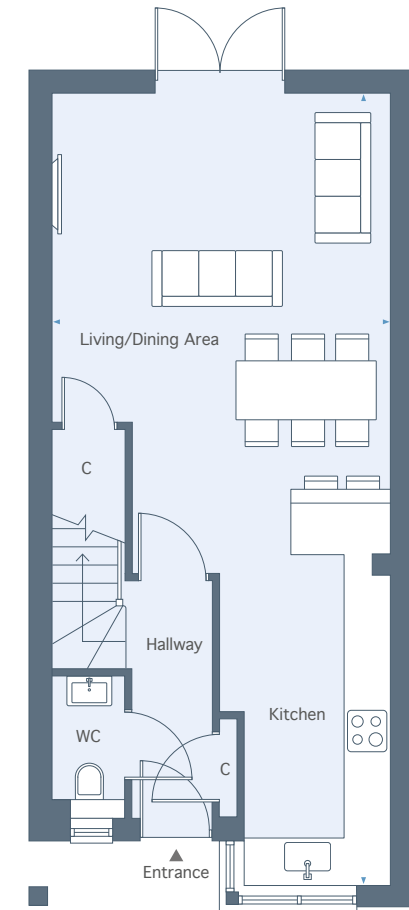
3 BEDROOM HOME

TOTAL AREA 1,420 sq ft 132 sq m

PLOTS 38, 39, 59, 60, 64, 65, 92 & 93

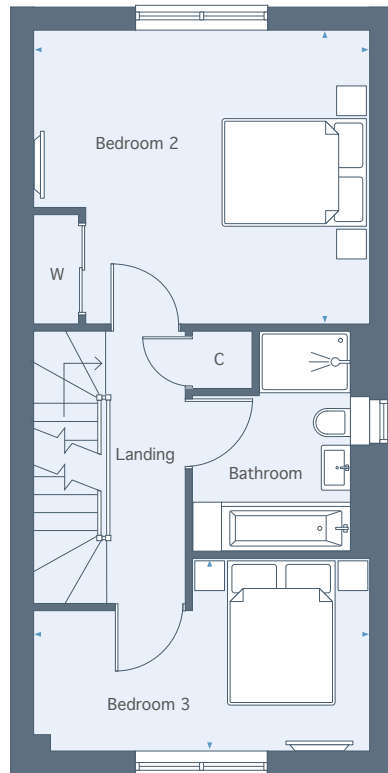
CHILMINGTON LAKES

KENT



GROUND FLOOR

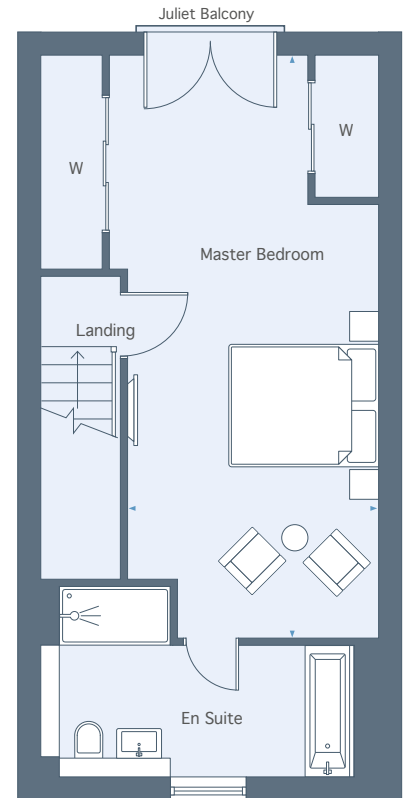
Living/Dining Area/Kitchen
10.58m x 4.50m 34'9" x 14'9"



FIRST FLOOR

Bedroom 2
4.50m x 3.93m 14'9" x 12'11"

Bedroom 3
4.50m x 2.58m 14'9" x 8'5"



SECOND FLOOR

Master Bedroom
7.83m x 4.50m 25'8" x 14'9"

Total Area 1,420 sq ft 132 sq m

01233 225 701 | chilmington.co.uk

Please note, floor plans and dimensions are taken from architectural drawings and are for guidance only. Dimensions stated are within a tolerance of plus or minus 50mm. Overall dimensions are usually stated and there may be projections into these. With our continual improvement policy we constantly review our designs and specification to ensure we deliver the best product to our customers. Computer generated images not to scale. Finishes and materials may vary and landscaping is illustrative only. Kitchen layouts are indicative only and may change. To confirm specific details on our homes please ask your Sales Consultant.

CHILMINGTON
LAKES
K E N T

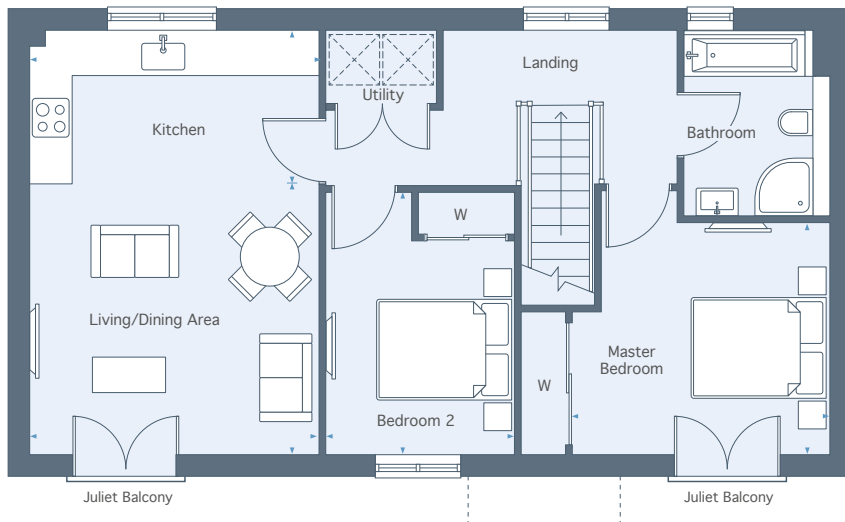


THE HAMILTON

2 BEDROOM HOME
TOTAL AREA 831 sq ft 77.2 sq m
PLOTS 86, 95, 118, 119, 120 & 121

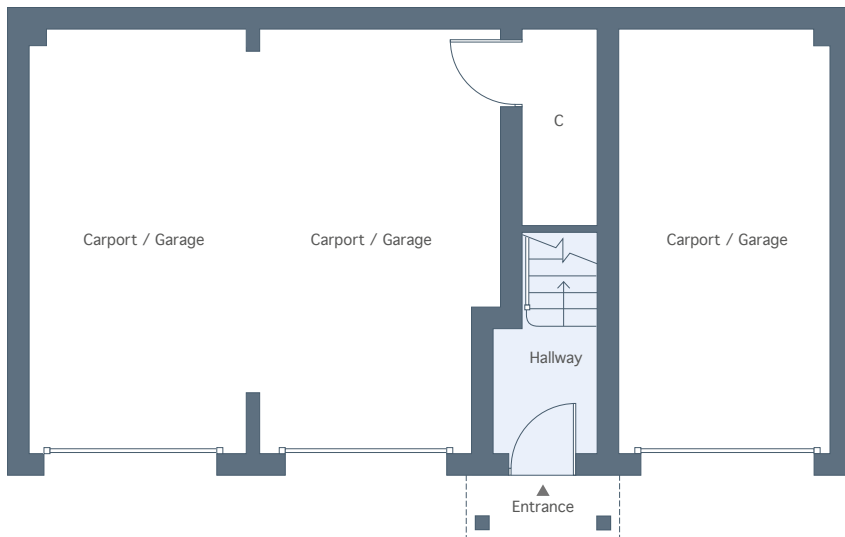
CHILMINGTON LAKES

KENT



FIRST FLOOR

Living/Dining Area	4.15m x 3.88m	13'7" x 12'8"
Kitchen	4.15m x 2.20m	13'7" x 7'2"
Bedroom 1	4.40m x 3.63m	14'5" x 11'10"
Bedroom 2	3.78m x 2.72m	12'4" x 8'11"



GROUND FLOOR

Total Area 831 sq ft 77.2 sq m

01233 225 701 | chilmington.co.uk

Please note, floor plans and dimensions are taken from architectural drawings and are for guidance only. Dimensions stated are within a tolerance of plus or minus 50mm. Overall dimensions are usually stated and there may be projections into these. With our continual improvement policy we constantly review our designs and specification to ensure we deliver the best product to our customers. Computer generated images not to scale. Finishes and materials may vary and landscaping is illustrative only. Kitchen layouts are indicative only and may change. To confirm specific details on our homes please ask your Sales Consultant.